

Galaxy Dimension

Access control features

Galaxy Dimension combines the best intrusion features with advanced access control functions in a single, integrated system. Installing and programming a full security system becomes easier, quicker and more efficient. With only one system to install and maintain, one point of contact for Technical Support and one training session for the complete system, there are savings in both time and money.

A combined intrusion and access control system offers the end user a system which retains maximum convenience whilst maintaining the highest level of

security at all times.

The Galaxy Door Control Module (DCM) enables the flexible access control facilities to be exploited. Each DCM provides fully integrated security for up to two doors.

The integrated design lets installers plan a system more easily. First decide which separate areas (Groups) need to be protected. Then just assign the doors, detectors and user templates to each area as required. The system does the rest. Simple!



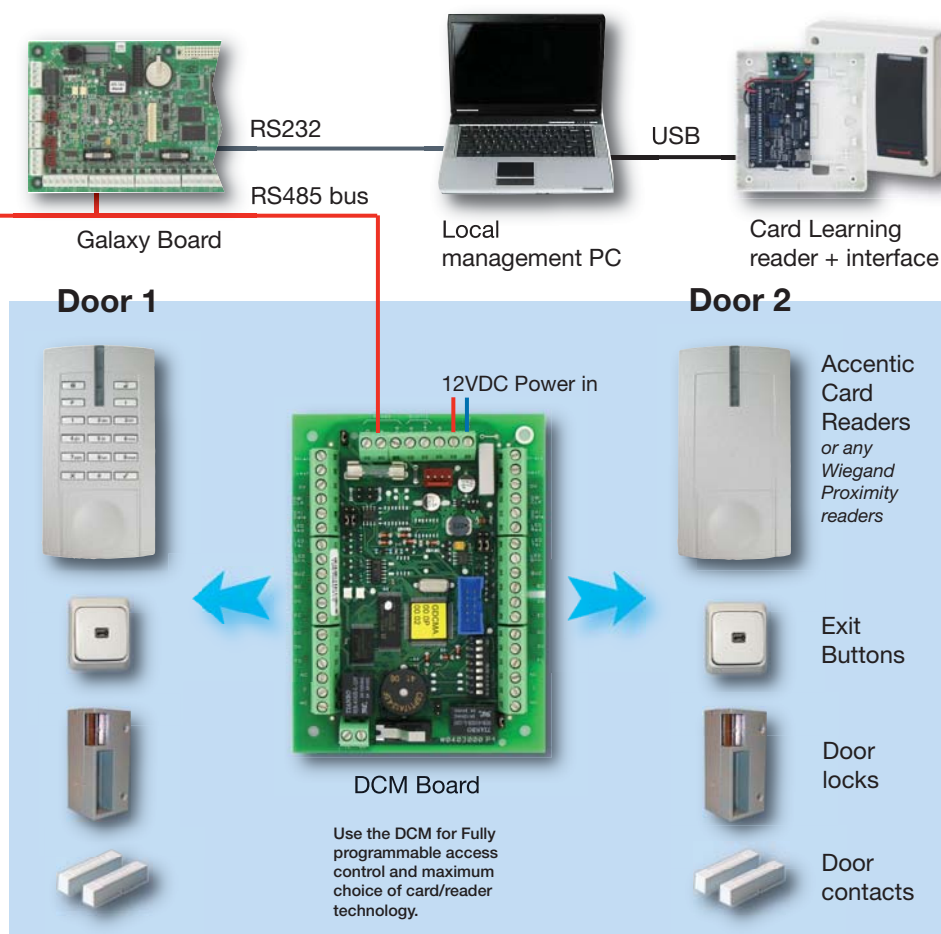
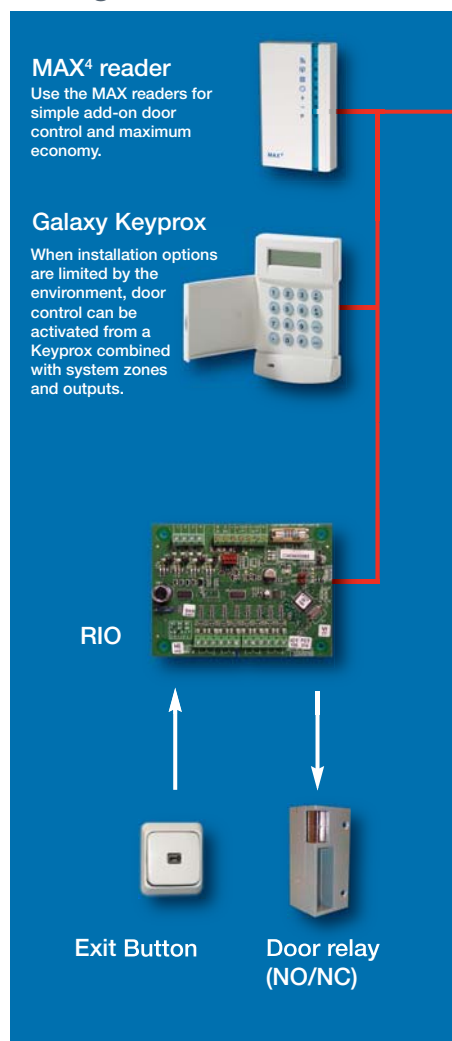
Features:

- Up to 64 doors controlled.
- Area based integrated access and intrusion control. No access if area is set. Prevents false alarms.
- Up to 1000 users.
- Access event log with 1000 events recorded in panel (separate intruder log).
- Fully customisable weekly schedules to control access, auto-setting and output functions.
- Up to 32 yearly holiday schedules each with 20 periods.
- Compliant to both EN50131 and EN50133 for combined intruder detection and access control
- User's access controlled by access templates and group set status.
- Area behind a door is unset automatically upon access if user has authority. This prevents false alarms due to failure to unset.
- Groups can be set by pressing the Menu Recall button after card swipe, or by triple swipe.
- A system keypad can be linked to each reader for Menu Recall function control.
- Evacuation control will allow doors to unlock in the event of fire.
- Accentic readers have tamper protection for compliance to EN50131-3. Required for setting and unsetting the system
- Wiegand compatibility - gives the flexibility to work with a huge range of reader and card technologies up to 40 Bits. Allows compatibility to retrofit existing installations.
 - Compatible with Wiegand keypads that use 8-bit Burst mode.
 - DCM modules available in compact plastic box or combined with a PSU and RIO expansion module in a metal box for installation convenience.

Galaxy Dimension

Access control features

Configuration chart



Device/Panel	GD-48	GD-96	GD-264	GD-520
Access Doors	8	32	32	64
DCMs	4	16	16	32
Keyprox units	3	7	7	24
MAX ⁴ units	4	16	16	32

Ordering

C080	Dual door controller (DCM) in stand-alone box
C081	Dual door controller (DCM) with Power Supply Unit (12V- 2,75A-34Ah) and RIO in a metallic case
026422.87	Accentic Wiegand reader (Mifare)
026423.87	Accentic Wiegand reader and keypad (Mifare)
026363.02	Accentic Mifare card (x1)
026363.07	Accentic Mifare keyprox TAG (x1)
R058-CD-DG	User Management Software for Windows with Dongle
C086	Card reader interface for PC
MX04-NC	MAX ⁴ single door control unit with normally closed relay
MX04-NO	MAX ⁴ single door control unit with normally open relay
CP038	MK7 keyprox - LCD keypad with Prox reader
CP038-H	MK7 Keyprox with HID compatible reader
YX0-0002	Proximity card (credit card) for MAX and Keyprox
YX0-0004	Proximity Keyfob Tag for for MAX and Keyprox
YX0-0020	Proximity Keyfob TAG for Keyprox only

Honeywell reserves the right to alter the specification of products without notice

Find out more:

www.honeywell.com/security/uk

Fax: +44 (0) 1698 738300

email: UK64SalesTeam@honeywell.com

Honeywell Security Group

Newhouse Industrial Estate

Motherwell

Lanarkshire

ML1 5SB

Scotland

Ampèrestraat 41,

1446 TR Purmerend

Nederland

Tel: +31 (0)299 410 200

www.honeywell.com

HSC-GalaxyDAC-06-EN(0210)DS-Z

June 1010

© 2010 Honeywell International Inc.

Honeywell