

ADPRO® PRO Series

Accessories

To maximise the benefits of the ADPRO PRO series products, facilitate the installation process, and ensure better control, Xtralis offers several accessories that can be used when installing any of the ADPRO PRO series products (exceptions are mentioned where they occur).

IFM-485-ST - Interface Module RS-485

The installation software (IFM-485-ST) is available as an accessory and is preconfigured and equipped with the necessary connectors to be operated with any detector of the PRO Series.

IFM-485-ST offers the following advantages:

- Alarm management/ monitoring signal.
- Remote access to detector.
- Connection of up to 16 detectors to a data bus (maximum bus length including 'stitches': 1000 m).
- For use together with security and traffic detectors from Xtralis.
- Very useful for alignment and signal check during setting up and routine maintenance.
- Indicates the amplitudes generated by wanted as well as unwanted targets.
- Helps setting the gain control correctly during walk tests and also shows the magnitude of disturbance signals. The information for installation and signal monitoring is displayed on the screen of the PC.
- Features a built-in termination resistor.
- Requires an interface module is required to convert RS232 to RS485.



PRO-SUN-SLD — Sunshield

- Easy installation and retro-fitting.
- Suitable for all PRO detector models (not for PRO-250H).
- Serves as protection in high temperatures due to direct sunlight (air cushion).
- Sunroof to be mounted over the standard detector housing to avoid false alarms, when mounting location is with unfavourable solar radiation; for example deep-standing sun during sunrise/sunset or reflections from top (e.g. reflective building facades) are to be expected.
- For safety reasons a rope (not supplied) can be fixed on the bottom of the sunshield.



AD 851 (Alignment Telescope)

- Precise adjustment of the detector over denominated detection ranges of up to 150 m.



CT PRO2 (Wireless Walk Tester)

- Enables precise adjustments of the detector over the nominal detection range. Optical, as well as acoustic indications, plus a LED bar showing the signal strength makes this product a "must have" tool.
- Consists of a transmitter connected to the RS-485 test socket in the detector and a battery-operated receiver.



ZA P-L1 (Pole-mount Attachment)

- Suitable for all models.
- Allows the detector to be mounted on a mast.
- The attachment is suitable for masts with diameter of 40-160 mm.

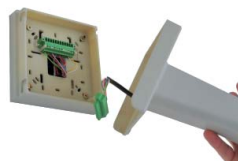


ADPRO® PRO Series

Accessories

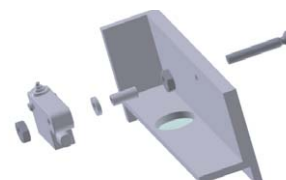
PRO-CMB-W (Cable Managed Bracket)

- Robust and durable cable managed bracket that can be used for all detectors (except PRO-250H).
- Optional accessory that offers an easy and quick solution for an efficient installation.
- Hidden cabling discouraging cable vandalism.
- Standard compliance.
- Tamper protection and detection (including sealable locking screw).
- Tamper switch for detection of removal from mounting surface and opening the base junction box.
- Automatic tamper alarm of the detector when housing is opened or tilt (vandalism alarm).
- Field of view respectively range, sensitivity and area adaptable.
- Identifiable (via RS-485).
- Pre-wired for easy and fast installation.
- Off-site assembly preparation (address, parameter pre-setting etc.) to keep expensive parts in a safe environment until they are needed).
- Plug and play final installation.
- An integrated 14-pin terminal in the base plate allows separate wiring and detector installation for an efficient work.
- The bracket is retractable and can be opened at any time for maintenance or service reasons.
- An additional pole mount accessory is also available as an option for hidden cabling on poles to protect against vandalism.



PRO-CMB-S (Tamper-Switch (PRO-CMB-S))

- Optional as a retro-fit kit.
- Tamper switch detection.
- Detects the removal from the mounting surface, as well as the opening of the base-plate with the cable terminal inside.
- The switch can be used as a separate zone or can be connected to the tamper-switch/tilt alarm of the detector housing.



AD653 (Pole-mount for PRO-250H)

- Especially for PRO-250H. The detector can be mounted on a mast with this special holder.
- The attachment is suitable for masts with diameter of 40-160 mm.



PRO-CMB-PA (Pole Mount-Adapter (PRO-CMB-W))

- Massive weatherproof stainless-steel pole-mount adaptor, complete with stainless-steel tension straps and sealing for the plastic wall bracket against ingress of water into the base plate.
- Unvisible and unaccessible cable routing to make vandalism more difficult.
- In combination with the optional tamper switch PRO-CMB-S built-in into PRO-CMB-W simultaneous detection of:
 - removal from mounting surface (Anti-Tamper).
 - opening of the retractable and detachable base junction box without permission.
- Blocking of tamper-switch is not possible with no means or tools.
- Cutting of cables, even with thinnest cutting-tools, is not possible, without causing a vandalism alarm.
- Cable protection far into the mast; also preventing from fraying of cables at the maybe not trimmed cable outlets of the pole.
- The fixing is suitable for masts with a diameter of 40-160 mm.



www.xtralis.com

UK and Europe +44 1442 242 330 **D-A-CH** +49 431 23284 1 **The Americas** +1 781 740 2223 7000

Middle East +962 6 588 5622 **Asia** +86 21 5240 0077 **Australia and New Zealand** +61 3 9936 7000

The contents of this document are provided on an "as is" basis. No representation or warranty (either express or implied) is made as to the completeness, accuracy or reliability of the contents of this document. The manufacturer reserves the right to change designs or specifications without obligation and without further notice. Except as otherwise provided, all warranties, express or implied, including without limitation any implied warranties of merchantability and fitness for a particular purpose are expressly excluded.

Xtralis, Xtralis logo, The Sooner You Know, VESDA, ICAM, ECO, OSID, HeiTel, ADPRO, IntrusionTrace, and LoiterTrace are trademarks and/or registered trademarks of Xtralis and/or its subsidiaries in the United States and/or other countries. Other brand names mentioned herein are for identification purposes only and may be trademarks of their respective holder(s). Your use of this document does not constitute or create a licence or any other right to use the name and/or trademark and/or label.

This document is subject to copyright owned by Xtralis. You agree not to copy, communicate to the public, adapt, distribute, transfer, sell, modify or publish any contents of this document without the express prior written consent of Xtralis.

Doc. no. 12882_02

ADPRO®
by **xtralis™**