



IP intercom

FULL IP/SIP AUDIO VIDEO ACCESS
INTERCOM AND INTERCOMMUNICATION
NEW GENERATION



A pioneer in IP intercom solutions, CASTEL upgrades the XELLIP range. More than a new design, technological developments and advanced features.

STANDARD QUOTES AND SCHEMATIC
(SEE PAGES 44-45)



- IP audio video access intercom compliant with disability regulations (DDA)
- Audio video intercommunication (various IP communications networks)
- Remote control release
- Audio conferencing, group calls, general calls
- Call overflow, call forwarding, call transfer, voice messaging, answerphone, automatic hang-up, privacy mode, do not disturb, call waiting, priority call, presence detection functions, etc. are available
- Time programming by profile (call and directory)
- Audio video backup
- PoE / PoE+ power supply
- Optional: WiFi



Main applications

Access intercom (tertiary industry buildings and industrial sites, HGV access points for logistics sites, office access, emergencies, etc.), Smartphones mobile intercom, assistance intercom (secured waiting rooms, help points, car parks, motorway toll booths, transportation, etc.), service intercommunication, customisable intercom, prisons intercom (cell, security and access intercom, counter intercom, visiting rooms intercom, etc.), medical sector intercom (operating theatres, etc.), and many other customised applications.



Main benefits



HD video quality

- > Colour video camera (1280x800)
- > Wide angle (170° horizontal - 100° vertical)
- > Removable camera window for easier maintenance (patented system)

Style and durability

- > Design combining modernity with simplicity
- > Designed for the most demanding environments: IK 09, IP 66 (depending on the model)

Hi-Fi sound quality

- > 10 W power
- > Full Duplex communication
- > Noise and echo cancelling system (DSP)
- > 16 kHz sampling frequency
- > Mechanical, acoustically optimised design

Native Full IP / SIP

- > 1 single network cable (RJ45) for managing audio, video, data and power supply (PoE / PoE +)

Full connectors

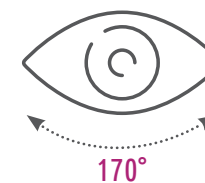
- > 2 RJ45: switch function, bus IP architecture, network loopback
- > WiFi connection (optional)
- > USB Port: external camera
- > RS485: input / output modules
- > 2 inputs / 2 relays

Total intercommunication

- > Between the different stations over an IP network using the SIP protocol
- > Via a direct SIP link - Stand Alone
- > Or through an SIP Castel server or an IPBX



Station for help point - refuge area



IP	SIP protocol (RFC 3261)	PoE (IEEE 802.3af) PoE+ (IEEE 802.3at)	Full Duplex	Audio codec: G711 Ulaw/Alaw, GSM, G722, G729	Ethernet connection security with 802.1X protocol	DDA compliant stations
Wiring: RJ45	DTMF: RFC 2833, SIP INFO	WiFi (IEEE 802.11a/b/g/n)	DSP technology	Video codec: CIF/QCIF, VGA/ QVGA, HD, H263, H263+, H264	SNMP V2 AND V3 STATIC IP OR DHCP	Stations with integrated web interface

[View the Xellip range video presentation](#)





IP intercom



Castel SIP application



Supervision of communications, access control, technical alarms, etc.



Entry station with Bluetooth reader

Multi-support call reception

- > Dedicated master stations and monitors
- > Smartphones and tablets (using the Castel SIP application)
- > PC Softphone (SIP audio video reception interface)
- > SIP phones, GSM, DECT, analog phones, etc.

Interoperability with the Security ecosystem

- > SIP Protocol
- > The most common audio and video codecs (G711, G722, G729, GSM, H263, H263+, H264, etc.)
- > SNMP V2 / V3
- > RTSP
- > **ONVIF**

Easy and user-friendly web interface

- > For remote configuration of the stations and the servers

A wide range adapted to different environments

- > Desk master station or stainless steel build-in version
- > Reception monitors
- > Audio-video entry stations with call buttons, names scrolling, keypad
- > Waterproof disinfectable stations
- > Audio-video integration kits
- > Entry stations with access control reader Mifare, Desfire, Bluetooth, etc.

A solution that complies with laws relating to accessibility for disabled people (DDA)

- > Wide angle, colour video camera
- > Pictograms for disabled people, viewed with coloured LEDs (or directly on screen according to the models)
- > Sound damping messages
- > Integrated audio induction loop
- > Keypad with Braille buttons



MASTER STATIONS



XE DESK-SCREEN V-P

Audio video Full IP/SIP master station
REF **500.2600**

- > 4.3 inch TFT touch screen
- > Built-in colour video camera
- > Numerical keypad and functions keys
- > 4 programmable function keys
- > ABS case, wall-mounted or desktop stand (zamac)
- > IP40 rating
- > PoE power supply (or optional external power supply)
- > H 255 mm x W 127 mm x D 47 mm (with desktop stand H 255 mm x W 127 mm x D 155 mm)

XE HANDSET-SCREEN V-P

Handset version
REF **500.5600**



XE DESK-GRAPH-P

Audio Full IP/SIP master station
REF **500.2000**

- > Graphic display 128x64 backlighting
- > Numerical keypad and functions keys
- > 4 programmable function keys
- > ABS case, wall-mounted or desktop stand (zamac)
- > IP40 rating
- > PoE power supply (or optional external power supply)
- > H 255 mm x W 127 mm x D 47 mm (with desktop stand H 255 mm x W 127 mm x D 155 mm)

XE HANDSET-GRAPH-P

Handset version
REF **500.5000**

MASTER STATIONS BUILD-IN VERSION



XE PLATINE-SCREEN

Audio video Full IP/SIP master station build-in version
REF **500.9260**

- > Stainless steel 316 L vandal proof front panel
- > 4.3 inch TFT screen
- > Numerical keypad and functions keys
- > 6 programmable function keys
- > Integrated induction loop
- > IP64 - IK07 rating
- > PoE power supply (or optional external power supply)
- > H 260 mm x W 310 mm x D 2 mm (flush-mounted with flush box D 60 mm)

EXTENSION 20 BP

20 additional function keys for XE PLATINE-SCREEN
REF **500.9270**



XE PLATINE-GRAPH

Audio Full IP/SIP master station build-in version
REF **500.9200**

- > Stainless steel 316 L vandal proof front panel
- > Graphic display 128x64 backlighting
- > Functions keys
- > Integrated induction loop
- > IP64 - IK07 rating
- > PoE power supply (or optional external power supply)
- > H 280 mm x W 130 mm x D 2 mm (flush-mounted with flush box D 47 mm)





MASTER STATIONS FOR MEDICAL SECTOR



XE MED-P

Audio Full IP/SIP waterproof disinfectable master station
REF **540.4000**

- > Graphic display 128x64 backlighting
- > Numerical keypad and functions keys
- > 4 programmable function keys
- > Disinfectable polyester front panel
- > IP64 - IK07 rating
- > PoE power supply (or optional external power supply)
- > H 280 mm x W 130 mm x D 4 mm (flush-mounted with flush box D 47 mm)
- H 282.5 mm x W 132.5 mm x D 65 mm (surface-mounted with optional XEKMED surface box)



XE MED 4B

Audio Full IP/SIP waterproof disinfectable master station with 4 buttons
REF **540.4300**

- > 4 programmable function keys
- > 2 buttons (call management)
- > Disinfectable polyester front panel
- > IP64 - IK07 rating
- > PoE power supply (or optional external power supply)
- > H 280 mm x W 130 mm x D 4 mm (flush-mounted with flush box D 47 mm)
- H 282.5 mm x W 132.5 mm x D 65 mm (surface-mounted with optional XEKMED surface box)



XE MED V4B SCREEN

Full IP/SIP waterproof disinfectable with 4 buttons and two-way video master station
REF **540.4600**

- > TFT color 4.3 inch screen
- > Built in color video camera
- > 4 programmable function keys
- > Disinfectable polyester front panel
- > 3 leds DDA compliant
- > Integrated induction loop
- > IP64 - IK07 rating
- > PoE power supply (or optional external power supply)
- > H 280 mm x W 170 mm x D 4 mm (flush-mounted with flush box D 47 mm)
- H 282.5 mm x W 172.5 mm x D 65 mm (surface-mounted with optional surface box)

RECEPTION MONITORS SMALL OR MEDIUM SERVICES / OFFICES



XE MONITOR-P

Audio video Full IP/SIP reception monitor
REF **500.8000**

- > 7 inch TFT touch screen
- > 4 function keys
- > ABS case, wall-mounted or optional desktop stand
- > IP40 rating
- > PoE power supply (or optional external power supply)
- > H 169 mm x W 210 mm x D 36 mm (with desktop stand H 195 mm x W 210 mm x D 170 mm)



XE MONITOR CCTV

Audio video Full IP/SIP reception monitor with external IP cameras display
REF **500.8100**

- > 7 inch TFT touch screen
- > 4 function keys
- > External IP cameras display
- > ABS case, wall-mounted or optional desktop stand
- > IP40 rating
- > PoE power supply (or optional external power supply)
- > H 169 mm x W 210 mm x D 36 mm (with desktop stand H 195 mm x W 210 mm x D 170 mm)

AUDIO VIDEO INTERCOM XELLIP RANGE



XE VIDEO 1B

Audio video Full IP/SIP entry station with 1 call button DDA compliant
REF **590.2000**

- > Stainless steel 316 L vandal proof front panel
- > HD colour video camera - Wide angle 170° (ONVIF)
- > Full Duplex 10 W communications
- > 1 call button and backlighting label
- > 3 leds for DDA compliance
- > Integrated induction loop
- > IP65 - IK09 rating
- > 2 RJ45 (switch function), USB port, RS485 bus, 2 inputs, 2 relays
- > PoE power supply (or optional external power supply)
- > H 280 mm x W 145 mm x D 2 mm (flush-mounted with flush box D 61 mm)
- H 280 mm x W 145 mm x D 63 mm (surface mounted)



XE VIDEO 2B

Audio video Full IP/SIP entry station with 2 call buttons DDA compliant
REF **590.2100**

- > Stainless steel 316 L vandal proof front panel
- > HD colour video camera - Wide angle 170° (ONVIF)
- > Full Duplex 10 W communications
- > 2 call buttons and backlighting labels
- > 3 leds for DDA compliance
- > Integrated induction loop
- > IP65 - IK09 rating
- > 2 RJ45 (switch function), USB port, RS485 bus, 2 inputs, 2 relays
- > PoE power supply (or optional external power supply)
- > H 280 mm x W 145 mm x D 2 mm (flush-mounted with flush box D 61 mm)
- H 280 mm x W 145 mm x D 63 mm (surface mounted)



XE VIDEO 3B

Audio video Full IP/SIP entry station with 3 call buttons DDA compliant
REF **590.2200**

- > Stainless steel 316 L vandal proof front panel
- > HD colour video camera - Wide angle 170° (ONVIF)
- > Full Duplex 10 W communications
- > 3 call buttons and backlighting labels
- > 3 leds for DDA compliance
- > Integrated induction loop
- > IP65 - IK09 rating
- > 2 RJ45 (switch function), USB port, RS485 bus, 2 inputs, 2 relays
- > PoE power supply (or optional external power supply)
- > H 280 mm x W 145 mm x D 2 mm (flush-mounted with flush box D 61 mm)
- H 280 mm x W 145 mm x D 63 mm (surface mounted)



XE VIDEO 4B

Audio video Full IP/SIP entry station with 4 call buttons DDA compliant
REF **590.2300**

- > Stainless steel 316 L vandal proof front panel
- > HD colour video camera - Wide angle 170° (ONVIF)
- > Full Duplex 10 W communications
- > 4 call buttons and backlighting labels
- > 3 leds for DDA compliance
- > Integrated induction loop
- > IP65 - IK09 rating
- > 2 RJ45 (switch function), USB port, RS485 bus, 2 inputs, 2 relays
- > PoE power supply (or optional external power supply)
- > H 280 mm x W 145 mm x D 2 mm (flush-mounted with flush box D 61 mm)
- H 280 mm x W 145 mm x D 63 mm (surface mounted)



XE VIDEO 6B

Audio video Full IP/SIP entry station with 6 call buttons DDA compliant
REF **590.2400**

- > Stainless steel 316 L vandal proof front panel
- > HD colour video camera - Wide angle 170° (ONVIF)
- > Full Duplex 10 W communications
- > 6 call buttons and backlighting labels
- > 3 leds for DDA compliance
- > Integrated induction loop
- > IP65 - IK09 rating
- > 2 RJ45 (switch function), USB port, RS485 bus, 2 inputs, 2 relays
- > PoE power supply (or optional external power supply)
- > H 280 mm x W 145 mm x D 2 mm (flush-mounted with flush box D 61 mm)
- H 280 mm x W 145 mm x D 63 mm (surface mounted)



XE VIDEO 10B

Audio video Full IP/SIP entry station with 10 call buttons DDA compliant
REF **590.2500**

- > Stainless steel 316 L vandal proof front panel
- > HD colour video camera - Wide angle 170° (ONVIF)
- > Full Duplex 10 W communications
- > 10 call buttons and backlighting labels
- > 3 leds for DDA compliance
- > Integrated induction loop
- > IP65 - IK09 rating
- > 2 RJ45 (switch function), USB port, RS485 bus, 2 inputs, 2 relays
- > PoE power supply (or optional external power supply)
- > H 375 mm x W 145 mm x D 2 mm (flush-mounted with flush box D 61 mm)
- H 375 mm x W 145 mm x D 63 mm (surface-mounted)





AUDIO VIDEO INTERCOM XELLIP RANGE



XE PAD VIDEO 1B

Audio video Full IP/SIP entry station with names scrolling and 1 call button DDA compliant
REF **590.5000**

- > Stainless steel 316 L vandal proof front panel
- > HD colour video camera - Wide angle 170° (ONVIF)
- > Full Duplex 10 W communications
- > 1 call button and backlighting label
- > 3 keys for names scrolling
- > 2,8 inch TFT 240x320 colour screen
- > 3 pictograms for DDA compliance displayed on screen
- > Integrated induction loop
- > IP65 - IK08 rating
- > 2 RJ45 (switch function), USB port, RS485 bus, 2 inputs, 2 relays
- > PoE power supply (or optional external power supply)
- > H 375 mm x W 145 mm x D 2 mm (Flush-mounted with flush box D 61 mm)
- H 375 mm x W 145 mm x D 63 mm (surface-mounted)



XE PAD VIDEO 3B

Audio video Full IP/SIP entry station with names scrolling and 3 call buttons DDA compliant
REF **590.5100**

- > Stainless steel 316 L vandal proof front panel
- > HD colour video camera - Wide angle 170° (ONVIF)
- > Full Duplex 10 W communications
- > 3 call buttons and backlighting labels
- > 3 keys for names scrolling
- > 2,8 inch TFT 240x320 colour screen
- > 3 pictograms for DDA compliance displayed on screen
- > Integrated induction loop
- > IP65 - IK08 rating
- > 2 RJ45 (switch function), USB port, RS485 bus, 2 inputs, 2 relays
- > PoE power supply (or optional external power supply)
- > H 375 mm x W 145 mm x D 2 mm (Flush-mounted with flush box D 61 mm)
- H 375 mm x W 145 mm x D 63 mm (surface-mounted)



XE VIDEO 1B CLAV

Audio video Full IP/SIP entry station with keypad and 1 call button DDA compliant
REF **590.2600**

- > Stainless steel 316 L vandal proof front panel
- > HD colour video camera - Wide angle 170° (ONVIF)
- > Full Duplex 10 W communications
- > 1 call button and backlighting label
- > Numerical keypad for direct dial and access code, buttons with braille
- > 3 leds for DDA compliance
- > Integrated induction loop
- > IP65 - IK08 rating
- > 2 RJ45 (switch function), USB port, RS485 bus, 2 inputs, 2 relays
- > PoE power supply (or optional external power supply)
- > H 375 mm x W 145 mm x D 2 mm (Flush-mounted with flush box D 61 mm)
- H 375 mm x W 145 mm x D 63 mm (surface-mounted)



XE VIDEO 2B CLAV

Audio video Full IP/SIP entry station with keypad and 2 call buttons DDA compliant
REF **590.2700**

- > Stainless steel 316 L vandal proof front panel
- > HD colour video camera - Wide angle 170° (ONVIF)
- > Full Duplex 10 W communications
- > 2 call buttons and backlighting labels
- > Numerical keypad for direct dial and access code, buttons with braille
- > 3 leds for DDA compliance
- > Integrated induction loop
- > IP65 - IK08 rating
- > 2 RJ45 (switch function), USB port, RS485 bus, 2 inputs, 2 relays
- > PoE power supply (or optional external power supply)
- > H 375 mm x W 145 mm x D 2 mm (Flush-mounted with flush box D 61 mm)
- H 375 mm x W 145 mm x D 63 mm (surface-mounted)



XE PAD VIDEO CLAV

Audio video Full IP/SIP entry station with names scrolling and keypad DDA compliant
REF **590.5200**

- > Stainless steel 316 L vandal proof front panel
- > HD colour video camera - Wide angle 170° (ONVIF)
- > Full Duplex 10 W communications
- > Numerical keypad for direct dial and access code, buttons with braille
- > 3 keys for names scrolling
- > 2,8 inch TFT 240x320 colour screen
- > 3 pictograms for DDA compliance displayed on screen
- > Integrated induction loop
- > IP65 - IK08 rating
- > 2 RJ45 (switch function), USB port, RS485 bus, 2 inputs, 2 relays
- > PoE power supply (or optional external power supply)
- > H 375 mm x W 145 mm x D 2 mm (Flush-mounted with flush box D 61 mm)
- H 375 mm x W 145 mm x D 63 mm (surface-mounted)

AUDIO INTERCOM XELLIP RANGE



XE AUDIO 1B

Audio Full IP/SIP entry station with 1 call button DDA compliant
REF **590.0000**

- > Stainless steel 316 L vandal proof front panel
- > Full Duplex 10 W communications
- > 1 call button and backlighting label
- > 3 leds for DDA compliance
- > Integrated induction loop
- > IP65 - IK09 rating
- > 2 RJ45 (switch function), USB port, RS485 bus, 2 inputs, 2 relays
- > PoE power supply (or optional external power supply)
- > H 280 mm x W 145 mm x D 2 mm (Flush-mounted with flush box D 61 mm)
- H 280 mm x W 145 mm x D 63 mm (surface mounted)



XE AUDIO 2B

Audio Full IP/SIP entry station with 2 call buttons DDA compliant
REF **590.0100**

- > Stainless steel 316 L vandal proof front panel
- > Full Duplex 10 W communications
- > 2 call buttons and backlighting labels
- > 3 leds for DDA compliance
- > Integrated induction loop
- > IP65 - IK09 rating
- > 2 RJ45 (switch function), USB port, RS485 bus, 2 inputs, 2 relays
- > PoE power supply (or optional external power supply)
- > H 280 mm x W 145 mm x D 2 mm (Flush-mounted with flush box D 61 mm)
- H 280 mm x W 145 mm x D 63 mm (surface mounted)



XE AUDIO 3B

Audio Full IP/SIP entry station with 3 call buttons DDA compliant
REF **590.0200**

- > Stainless steel 316 L vandal proof front panel
- > Full Duplex 10 W communications
- > 3 call buttons and backlighting labels
- > 3 leds for DDA compliance
- > Integrated induction loop
- > IP65 - IK09 rating
- > 2 RJ45 (switch function), USB port, RS485 bus, 2 inputs, 2 relays
- > PoE power supply (or optional external power supply)
- > H 280 mm x W 145 mm x D 2 mm (Flush-mounted with flush box D 61 mm)
- H 280 mm x W 145 mm x D 63 mm (surface mounted)



XE AUDIO 4B

Audio Full IP/SIP entry station with 4 call buttons DDA compliant
REF **590.0300**

- > Stainless steel 316 L vandal proof front panel
- > Full Duplex 10 W communications
- > 4 call buttons and backlighting labels
- > 3 leds for DDA compliance
- > Integrated induction loop
- > IP65 - IK09 rating
- > 2 RJ45 (switch function), USB port, RS485 bus, 2 inputs, 2 relays
- > PoE power supply (or optional external power supply)
- > H 280 mm x W 145 mm x D 2 mm (Flush-mounted with flush box D 61 mm)
- H 280 mm x W 145 mm x D 63 mm (surface mounted)



XE AUDIO 6B

Audio Full IP/SIP entry station with 6 call buttons DDA compliant
REF **590.0400**

- > Stainless steel 316 L vandal proof front panel
- > Full Duplex 10 W communications
- > 6 call buttons and backlighting labels
- > 3 leds for DDA compliance
- > Integrated induction loop
- > IP65 - IK09 rating
- > 2 RJ45 (switch function), USB port, RS485 bus, 2 inputs, 2 relays
- > PoE power supply (or optional external power supply)
- > H 280 mm x W 145 mm x D 2 mm (Flush-mounted with flush box D 61 mm)
- H 280 mm x W 145 mm x D 63 mm (surface mounted)



XE AUDIO 10B

Audio Full IP/SIP entry station with 10 call buttons DDA compliant
REF **590.0500**

- > Stainless steel 316 L vandal proof front panel
- > Full Duplex 10 W communications
- > 10 call buttons and backlighting labels
- > 3 leds for DDA compliance
- > Integrated induction loop
- > IP65 - IK09 rating
- > 2 RJ45 (switch function), USB port, RS485 bus, 2 inputs, 2 relays
- > PoE power supply (or optional external power supply)
- > H 375 mm x W 145 mm x D 2 mm (Flush-mounted with flush box D 61 mm)
- H 375 mm x W 145 mm x D 63 mm (surface-mounted)



❖ AUDIO INTERCOM XELLIP RANGE



XE PAD AUDIO 1B

Audio Full IP/SIP entry station with names scrolling and 1 call button DDA compliant
REF **590.4000**

- > Stainless steel 316 L vandal proof front panel
- > Full Duplex 10 W communications
- > 1 call button and backlighting label
- > 3 keys for names scrolling
- > 2,8 inch TFT 240x320 colour screen
- > 3 pictograms for DDA compliance displayed on screen
- > Integrated induction loop
- > IP65 - IK08 rating
- > 2 RJ45 (switch function), USB port, RS485 bus, 2 inputs, 2 relays
- > PoE power supply (or optional external power supply)
- > H 375 mm x W 145 mm x D 2 mm (flush-mounted with flush box D 61 mm)
- H 375 mm x W 145 mm x D 63 mm (surface-mounted)



XE PAD AUDIO 3B

Audio Full IP/SIP entry station with names scrolling and 3 call buttons DDA compliant
REF **590.4100**

- > Stainless steel 316 L vandal proof front panel
- > Full Duplex 10 W communications
- > 3 call buttons and backlighting labels
- > 3 keys for names scrolling
- > 2,8 inch TFT 240x320 colour screen
- > 3 pictograms for DDA compliance displayed on screen
- > Integrated induction loop
- > IP65 - IK08 rating
- > 2 RJ45 (switch function), USB port, RS485 bus, 2 inputs, 2 relays
- > PoE power supply (or optional external power supply)
- > H 375 mm x W 145 mm x D 2 mm (flush-mounted with flush box D 61 mm)
- H 375 mm x W 145 mm x D 63 mm (surface-mounted)



XE AUDIO 1B CLAV

Audio Full IP/SIP entry station with keypad and 1 call button DDA compliant
REF **590.0600**

- > Stainless steel 316 L vandal proof front panel
- > Full Duplex 10 W communications
- > 1 call button and backlighting label
- > Numerical keypad for direct dial and access code, buttons with braille
- > 3 leds for DDA compliance
- > Integrated induction loop
- > IP65 - IK08 rating
- > 2 RJ45 (switch function), USB port, RS485 bus, 2 inputs, 2 relays
- > PoE power supply (or optional external power supply)
- > H 375 mm x W 145 mm x D 2 mm (flush-mounted with flush box D 61 mm)
- H 375 mm x W 145 mm x D 63 mm (surface-mounted)



XE AUDIO 2B CLAV

Audio Full IP/SIP entry station with keypad and 2 call buttons DDA compliant
REF **590.0700**

- > Stainless steel 316 L vandal proof front panel
- > Full Duplex 10 W communications
- > 2 call buttons and backlighting labels
- > Numerical keypad for direct dial and access code, buttons with braille
- > 3 leds for DDA compliance
- > Integrated induction loop
- > IP65 - IK08 rating
- > 2 RJ45 (switch function), USB port, RS485 bus, 2 inputs, 2 relays
- > PoE power supply (or optional external power supply)
- > H 375 mm x W 145 mm x D 2 mm (flush-mounted with flush box D 61 mm)
- H 375 mm x W 145 mm x D 63 mm (surface-mounted)



XE PAD AUDIO CLAV

Audio Full IP/SIP entry station with names scrolling and keypad DDA compliant
REF **590.4200**

- > Stainless steel 316 L vandal proof front panel
- > Full Duplex 10 W communications
- > Numerical keypad for direct dial and access code, buttons with braille
- > 3 keys for names scrolling
- > 2,8 inch TFT 240x320 colour screen
- > 3 pictograms for DDA compliance displayed on screen
- > Integrated induction loop
- > IP65 - IK08 rating
- > 2 RJ45 (switch function), USB port, RS485 bus, 2 inputs, 2 relays
- > PoE power supply (or optional external power supply)
- > H 375 mm x W 145 mm x D 2 mm (flush-mounted with flush box D 61 mm)
- H 375 mm x W 145 mm x D 63 mm (surface-mounted)

❖ INTERCOMS WITH BUILT IN ACCESS CONTROL READER XELLIP RANGE



XE VIDEO 1B MI/C

Audio video Full IP/SIP entry station with 1 call button and 13.56 MHz Mifare® serial number reader DDA compliant
REF **590.6600**

- > Stainless steel 316 L vandal proof front panel
- > 13.56 MHz Mifare® serial number reader and 2 leds (green : access granted, red : access refused)
- > HD colour video camera - Wide angle 170° (ONVIF)
- > Full Duplex 10 W communications
- > 1 call button and backlighting label
- > 3 leds DDA compliant
- > Integrated induction loop
- > IP65 - IK08 rating
- > 2 RJ45 (switch function), USB port, RS485 bus, 2 inputs, 2 relays
- > PoE power supply (or optional external power supply)
- > H 375 mm x W 145 mm x D 2 mm (flush-mounted with flush box D 61 mm)
- H 375 mm x W 145 mm x D 63 mm (surface-mounted)

XE VIDEO 1B MIS/C

13.56 MHz Mifare® sector reader version
REF **590.6700**

XE VIDEO 1B DES

13.56 MHz Mifare® Desfire® reader version
REF **590.6800**



XE VIDEO 2B MI/C

Audio video Full IP/SIP entry station with 2 call buttons and 13.56 MHz Mifare® serial number reader DDA compliant
REF **590.5900**

- > Stainless steel 316 L vandal proof front panel
- > 13.56 MHz Mifare® serial number reader and 2 leds (green : access granted, red : access refused)
- > HD colour video camera - Wide angle 170° (ONVIF)
- > Full Duplex 10 W communications
- > 2 call buttons and backlighting labels
- > 3 leds DDA compliant
- > Integrated induction loop
- > IP65 - IK08 rating
- > 2 RJ45 (switch function), USB port, RS485 bus, 2 inputs, 2 relays
- > PoE power supply (or optional external power supply)
- > H 375 mm x W 145 mm x D 2 mm (flush-mounted with flush box D 61 mm)
- H 375 mm x W 145 mm x D 63 mm (surface-mounted)



XE AUDIO 1B MI/C

Audio Full IP/SIP entry station with 1 call button and 13.56 MHz Mifare® serial number reader DDA compliant
REF **590.6100**

- > Stainless steel 316 L vandal proof front panel
- > 13.56 MHz Mifare® serial number reader and 2 leds (green : access granted, red : access refused)
- > Full Duplex 10 W communications
- > 1 call button and backlighting label
- > 3 leds DDA compliant
- > Integrated induction loop
- > IP65 - IK08 rating
- > 2 RJ45 (switch function), USB port, RS485 bus, 2 inputs, 2 relays
- > PoE power supply (or optional external power supply)
- > H 375 mm x W 145 mm x D 2 mm (flush-mounted with flush box D 61 mm)
- H 375 mm x W 145 mm x D 63 mm (surface-mounted)

XE AUDIO 1B MIS/C

13.56 MHz Mifare® sector reader version
REF **590.6200**

XE AUDIO 1B DES

13.56 MHz Mifare® Desfire® reader version
REF **590.6300**



XE AUDIO 2B MI/C

Audio Full IP/SIP entry station with 2 call buttons and 13.56 MHz Mifare® serial number reader DDA compliant
REF **590.5400**

- > Stainless steel 316 L vandal proof front panel
- > 13.56 MHz Mifare® serial number reader and 2 leds (green : access granted, red : access refused)
- > Full Duplex 10 W communications
- > 2 call buttons and backlighting labels
- > 3 leds DDA compliant
- > Integrated induction loop
- > IP65 - IK08 rating
- > 2 RJ45 (switch function), USB port, RS485 bus, 2 inputs, 2 relays
- > PoE power supply (or optional external power supply)
- > H 375 mm x W 145 mm x D 2 mm (flush-mounted with flush box D 61 mm)
- H 375 mm x W 145 mm x D 63 mm (surface-mounted)



INTERCOMS WITH BUILT IN ACCESS CONTROL READER XELLIP RANGE



XE PAD VIDEO MI/C

Audio video Full IP/SIP entry station with names scrolling and 13.56 MHz Mifare® serial number reader DDA compliant
REF **590.7600**

- > Stainless steel 316 L vandal proof front panel
- > 13.56 MHz Mifare® serial number reader and 2 leds (green : access granted, red : access refused)
- > HD colour video camera - Wide angle 170° (ONVIF)
- > Full Duplex 10 W communications
- > 3 keys for names scrolling
- > 2,8 inch TFT 240x320 colour screen
- > 3 pictograms for DDA compliance displayed on screen
- > Integrated induction loop
- > IP65 - IK08 rating
- > 2 RJ45 (switch function), USB port, RS485 bus, 2 inputs, 2 relays
- > PoE power supply (or optional external power supply)
- > H 375 mm x W 145 mm x D 2 mm (flush-mounted with flush box D 61 mm)
- > H 375 mm x W 145 mm x D 63 mm (surface-mounted)

XE PAD VIDEO MIS/C

13.56 MHz Mifare® sector reader version
REF **590.7700**

XE PAD VIDEO DES

13.56 MHz Mifare® Desfire® reader version
REF **590.7800**



XE PAD AUDIO MI/C

Audio Full IP/SIP entry station with names scrolling and 13.56 MHz Mifare® serial number reader DDA compliant
REF **590.7100**

- > Stainless steel 316 L vandal proof front panel
- > 13.56 MHz Mifare® serial number reader and 2 leds (green : access granted, red : access refused)
- > Full Duplex 10 W communications
- > 3 keys for names scrolling
- > 2,8 inch TFT 240x320 colour screen
- > 3 pictograms for DDA compliance displayed on screen
- > Integrated induction loop
- > IP65 - IK08 rating
- > 2 RJ45 (switch function), USB port, RS485 bus, 2 inputs, 2 relays
- > PoE power supply (or optional external power supply)
- > H 375 mm x W 145 mm x D 2 mm (flush-mounted with flush box D 61 mm)
- > H 375 mm x W 145 mm x D 63 mm (surface-mounted)

XE PAD AUDIO MIS/C

13.56 MHz Mifare® sector reader version
REF **590.7200**

XE PAD AUDIO DES

13.56 MHz Mifare® Desfire® reader version
REF **590.7300**

INTERCOMS WITH ACCESS CONTROL BLUETOOTH READER XELLIP RANGE

CASTEL has developed intercoms with built in readers associating the latest Mifare® contactless chip technology and a Bluetooth authentication using Smartphones.

This solution integrates virtual access cards in Smartphones, improving the access control security as well as feeling more instinctive.

Your Smartphone becomes the access key, giving up the traditional access control constraints.



Starting up is fairly simple, swiping one of the three included configuration cards in front of the reader.

Those three configuration cards allow you to select one of the three different modes according to your needs.



CARD MODE:

By placing your Smartphone in front of the reader.



TAP TAP MODE:

By tapping your Smartphone twice in your pocket for near or remote opening.



HANDS-FREE MODE:

By simply passing in front of the reader.



XE VIDEO 1B BLE

Audio video Full IP/SIP entry station with 1 call button and Bluetooth reader DDA compliant
REF **590.6900**

- > Stainless steel 316 L vandal proof front panel
- > Bluetooth reader and 2 leds (green : access granted, red : access refused)
- > HD colour video camera - Wide angle 170° (ONVIF)
- > Full Duplex 10 W communications
- > 1 call button and backlighting label
- > 3 leds DDA compliant
- > Integrated induction loop
- > IP65 - IK08 rating
- > 2 RJ45 (switch function), USB port, RS485 bus, 2 inputs, 2 relays
- > PoE power supply (or optional external power supply)
- > H 375 mm x W 145 mm x D 2 mm (flush-mounted with flush box D 61 mm)
- > H 375 mm x W 145 mm x D 63 mm (surface-mounted)

XE AUDIO 1B BLE

Audio 1 call button and Bluetooth reader version
REF **590.6400**



XE VIDEO 2B BLE

Audio video Full IP/SIP entry station with 2 call buttons and Bluetooth reader DDA compliant
REF **590.6900**

- > Stainless steel 316 L vandal proof front panel
- > Bluetooth reader and 2 leds (green : access granted, red : access refused)
- > HD colour video camera - Wide angle 170° (ONVIF)
- > Full Duplex 10 W communications
- > 2 call buttons and backlighting labels
- > 3 leds DDA compliant
- > Integrated induction loop
- > IP65 - IK08 rating
- > 2 RJ45 (switch function), USB port, RS485 bus, 2 inputs, 2 relays
- > PoE power supply (or optional external power supply)
- > H 375 mm x W 145 mm x D 2 mm (flush-mounted with flush box D 61 mm)
- > H 375 mm x W 145 mm x D 63 mm (surface-mounted)

XE AUDIO 2B BLE

Audio 2 call buttons and Bluetooth reader version
REF **590.5500**



XE PAD VIDEO BLE

Audio video Full IP/SIP entry station with names scrolling and Bluetooth reader DDA compliant
REF **590.7900**

- > Stainless steel 316 L vandal proof front panel
- > Bluetooth reader and 2 leds (green : access granted, red : access refused)
- > HD colour video camera - Wide angle 170° (ONVIF)
- > Full Duplex 10 W communications
- > 3 keys for names scrolling
- > 2,8 inch TFT 240x320 colour screen
- > 3 pictograms for DDA compliance displayed on screen
- > Integrated induction loop
- > IP65 - IK08 rating
- > 2 RJ45 (switch function), USB port, RS485 bus, 2 inputs, 2 relays
- > PoE power supply (or optional external power supply)
- > H 375 mm x W 145 mm x D 2 mm (flush-mounted with flush box D 61 mm)
- > H 375 mm x W 145 mm x D 63 mm (surface-mounted)

XE PAD AUDIO BLE

Audio with names scrolling and Bluetooth reader version
REF **590.7400**

INTERCOMS WITH BUILT IN KEYPAD AND ACCESS CONTROL READER PAD IP RANGE



PAD IP VIDEO-CLAV-MI/C

Audio video Full IP/SIP entry station with names scrolling, keypad and 13.56 MHz Mifare® serial number reader DDA compliant
REF **560.7610**

- > Stainless steel 316 L vandal proof front panel
- > 13.56 MHz Mifare® serial number reader and 2 leds (green : access granted, red : access refused)
- > Numerical keypad for direct dial and access code buttons with Braille
- > Built-in colour video camera
- > 3 keys for names scrolling
- > Graphic display 128x64 backlighting
- > 3 leds for DDA compliance (or displayed on screen)
- > Integrated induction loop
- > IP64 - IK07 rating
- > PoE power supply (or optional external power supply)
- > H 432 mm x W 140 mm x D 2 mm (in wall mounting with backing D 54,5 mm)
- > H 432 mm x W 140 mm x D 54,5 mm (surface mounting)

PAD IP VIDEO-CLAV-MIS/C

13.56 MHz Mifare® sector reader version
REF **560.7710**

PAD IP VIDEO-CLAV-DES

13.56 MHz Mifare® Desfire® reader version
REF **560.7810**



PAD IP AUDIO-CLAV-MI/C

Audio Full IP/SIP entry station with names scrolling, keypad and 13.56 MHz Mifare® serial number reader DDA compliant
REF **560.7110**

- > Stainless steel 316 L vandal proof front panel
- > 13.56 MHz Mifare® serial number reader and 2 leds (green : access granted, red : access refused)
- > Numerical keypad for direct dial and access code buttons with Braille
- > 3 keys for names scrolling
- > Graphic display 128x64 backlighting
- > 3 leds for DDA compliance (or displayed on screen)
- > Integrated induction loop
- > IP64 - IK07 rating
- > PoE power supply (or optional external power supply)
- > H 432 mm x W 140 mm x D 2 mm (in wall mounting with backing D 54,5 mm)
- > H 432 mm x W 140 mm x D 54,5 mm (surface mounting)

PAD IP AUDIO-CLAV-MIS/C

13.56 MHz Mifare® sector reader version
REF **560.7210**

PAD IP AUDIO-CLAV-DES

13.56 MHz Mifare® Desfire® reader version
REF **560.7310**



STATIONS FOR HELP POINTS ASSISTANCE / SHELTERS

CASTEL has many intercom stations references for call points and can also make specific developments in order to fit your needs as closely as possible.



XE AUDIO 1B HELP

Audio Full IP/SIP entry station with 1 call button and induction loop
REF **590.9920**

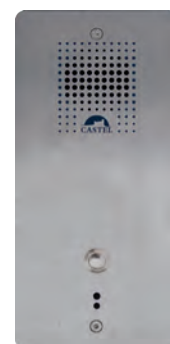
- > Stainless steel 316 L vandal proof front panel
- > Full Duplex 10 W communications
- > 1 backlit call button and Braille inscription
- > SOS serigraphy
- > 2 leds for DDA compliance
- > Integrated induction loop
- > IP65 - IK09 rating
- > 2 RJ45 (switch function), USB port, RS485 bus, 2 inputs, 2 relays
- > PoE power supply (or optional external power supply)
- > H 280 mm x W 145 mm x D 2 mm (flush-mounted with flush box D 61 mm)
- > H 280 mm x W 145 mm x D 63 mm (surface mounted)



XE P-2B-HELP

Audio Full IP/SIP entry station with 2 call buttons and induction loop
REF **530.7100**

- > Vandal proof conception
- > Stainless steel front panel
- > 2 call buttons with Braille inscription
- > 2 leds for DDA compliance
- > Integrated induction loop
- > IP65 - IK07 rating
- > PoE power supply (or optional external power supply)
- > H 400 x W 130 mm x D 2 mm (flush mounted)



XE-P-1BP-V2

Audio Full IP/SIP entry station with 1 call button
REF **530.2100**

- > Stainless steel 316 L vandal proof front panel
- > 1 call button
- > IP54 - IK09 rating
- > PoE power supply (or optional external power supply)
- > H 230 x W 110 mm x D 2 mm (flush-mounted with flush box D 55 mm)
- > H 233 mm x W 113 mm x D 67 mm (surface-mounted with surface box)

EMERGENCY CALL INTERCOM



XE ALARME

Discrete «anti hold-up» emergency call kit
REF **540.3500**

- > Steel case RAL 7035 colour
- > Integrated call button (remote call buttons possibility)
- > Signalisation led (call in progress)
- > IP40 rating
- > PoE power supply (or optional external power supply)
- > H 146 mm x W 110 mm x D 51 mm

TWO-WAY VIDEO INTERCOM CAP IP RANGE



CAP IP-V1B-SCREEN-P

Audio video Full IP/SIP entry station with 1 call button and two-way video DDA compliant
REF **565.2000**

- > Stainless steel 316 L vandal proof front panel
- > 4.3 inch colour screen
- > Built-in colour video camera
- > 1 call button illuminated
- > 3 leds for DDA compliance
- > Integrated induction loop
- > IP64 - IK07 rating
- > PoE power supply (or optional external power supply)
- > H 280 mm x W 170 mm x D 2 mm (flush-mounted with flush box D 47 mm)
- > H 282,5 mm x W 172,5 mm x D 65 mm (surface-mounted with surface box)

CAP IP-V2B-SCREEN-P

2 call buttons version
REF **565.2100**

STATIONS FOR PRISON SECTOR

CASTEL has developed more than fifty intercom stations and door frame intercom kits, to answer all the prisons needs (cell, security and access intercom, counter intercom, visiting rooms intercom, etc.).



XE P-1B-CELL1

Audio Full IP/SIP intercom stations - cell/corridor
REF **550.0000**

- > Composed by one cell station and one corridor station
- > Vandal proof conception, stainless steel front panel
- > 1 call button with signalisation led, 2 light buttons (cell and shower) on the cell station
- > 1 acknowledgement button and 1 light button (night-light) on the corridor station
- > IK09 rating
- > PoE power supply (or optional external power supply)
- > H 220 mm x W 120 mm x D 2 mm (flush mounted - flush mounting D: cell station 45 mm - corridor station 60 mm)



XE P-1B-CELL2

Audio Full IP/SIP intercom stations - cell/corridor
REF **550.0100**

- > Composed by one cell station and one corridor station
- > Vandal proof conception, stainless steel front panel
- > 1 call button with signalisation led, 1 light button on the cell station
- > 1 acknowledgement button and 1 light button on the corridor station
- > IK09 rating
- > PoE power supply (or optional external power supply)
- > H 210 mm x W 110 mm x D 2 mm (flush mounted - flush mounting D: cell station 70 mm - corridor station 35 mm)



XE P-1B-CELL3

Audio Full IP/SIP intercom stations - cell /corridor
REF **550.0200** and **550.0300**

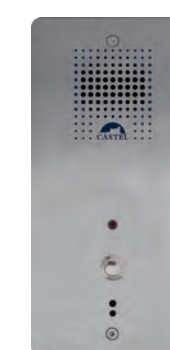
- > Composed by one cell station and one corridor station
- > Vandal proof conception, stainless steel front panel
- > 1 call button with signalisation led on the cell station
- > 1 acknowledgement lock and 1 light button (night-light) on the corridor station
- > IK09 rating
- > PoE power supply (or optional external power supply)
- > H 190 mm x W 70 mm x D 2 mm (flushed mounted - flush mounting D: cell station 128 mm - corridor station 40 mm)



XE P-1B-CP

Audio Full IP/SIP emergency call intercom with mushroom call button
REF **101990**

- > Stainless steel 316 L vandal proof front panel
- > 1 emergency mushroom call button
- > Signalisation led
- > IP65 - IK09 rating
- > PoE power supply (or optional external power supply)
- > H 270 x W 120 mm x D 2 mm (flush-mounted with flush box D 55 mm)
- > H 270 mm x W 120 mm x D 57 mm (surface mounted)



XE P-1B LIAISON V2

Audio Full IP/SIP intercom system for access intercom (corridor grids)
REF **530.3100**

- > Stainless steel 316 L vandal proof front panel
- > 1 call button with signalisation led
- > IP54 - IK09 rating
- > PoE power supply (or optional external power supply)
- > H 230 x W 110 mm x D 2 mm (flush-mounted with flush box D 55 mm)
- > H 233 mm x W 113 mm x D 67 mm (surface-mounted with surface box)



IP intercom

KITS



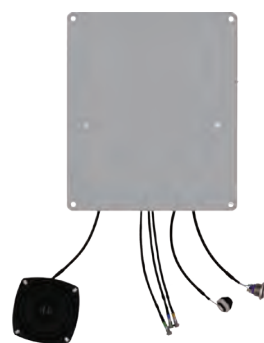
XE K-VIDEO-1B

Audio video Full IP/SIP intercom kit with 1 call button
REF **590.5610**

- > Kit with board integrated in a steel case
- > HD colour video camera - Wide angle 170° (ONVIF) - deported with 2m USB cable
- > Full Duplex 10 W communications
- > 3 leds DDA compliant
- > Deported micro, speaker, leds and call button (65 cm cables)
- > 2 RJ45 (switch function), USB port, RS485 bus, 2 inputs / 2 relays
- > IP40 rating
- > PoE power supply (or optional external power supply)
- > H 150 mm x W 130 mm x D 46 mm

XE K-VIDEO-10B

Audio video 10 call buttons kit version
REF **590.5615**



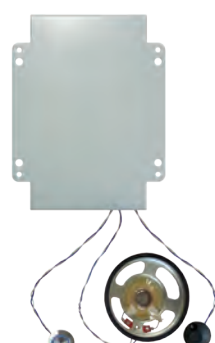
XE K-AUDIO-1B

Audio Full IP/SIP intercom kit with 1 call button
REF **590.5600**

- > Kit with board integrated in a steel case
- > Full Duplex 10 W communications
- > 3 leds DDA compliant
- > Deported micro, speaker, leds and call button (65 cm cables)
- > 2 RJ45 (switch function), USB port, RS485 bus, 2 inputs / 2 relays
- > IP40 rating
- > PoE power supply (or optional external power supply)
- > H 150 mm x W 130 mm x D 46 mm

XE K-AUDIO-10B

Audio 10 call buttons kit version
REF **590.5605**



XE K-1B-LIAISON

Audio Full IP/SIP intercom kit with illuminated call button
REF **540.5300**

- > Kit with board integrated in a steel case
- > Remote microphone, loudspeaker and call button
- > Illuminated call button (visual indication: idle state, call in progress or communication)
- > IP40 rating
- > PoE power supply (or optional external power supply)
- > H 137 mm x W 105 mm x D 33 mm



XE K-ASC-P

Audio Full IP/SIP intercom kit for lifts
REF **570.0000**

- > Lift standards compliant EN 81-28
- > Kit with board integrated in a steel case
- > Remote microphone, integrated loudspeaker (remote loudspeaker possibility)
- > Induction loop
- > IP40 rating
- > PoE power supply (or optional external power supply)
- > H 272 mm x W 105 mm x D 40,5 mm

ATEX STATION



XE 1B ATEX

Audio Full IP/SIP intercom with 1 call button ATEX version
REF **540.6900**

- > Designed for explosive environment according to 94/9/CE (ATEX EE xd II BT6 II2G)
- > 1 call button
- > Orange aluminium front panel
- > IP66 rating
- > PoE power supply (or optional external power supply)
- > H 350 mm x W 215 mm x D 190 mm (surface mounting)

XE K 1E 1S

1 TOR input and 1 output relay kit (allow to deport or add relay)
REF **540.5800**

XE K V1B LECT

Audio video Full IP/SIP intercom kit with 1 call button and one reader connection possibility
REF **540.5900**

SMALL AND MEDIUM SERVICES SECTOR PACK



PACK EASY

Pre-set intercom pack for small and medium services
REF **560.8900**

Plug & Play solution:

- Your factory pre-set door entry station is programmed to call the reception monitor,
- The 2 stations are directly powered (PoE) by the switch.

This solution is DDA compliant:

- Wide angle colour video camera allowing to visualise disabled people who wish to access the building.
- 3 pictograms viewed with coloured LEDs to indicate the operating status (call in progress, communication, door opening).
- These 3 steps are accompanied by audio messages.
- Integrated audio induction loop.

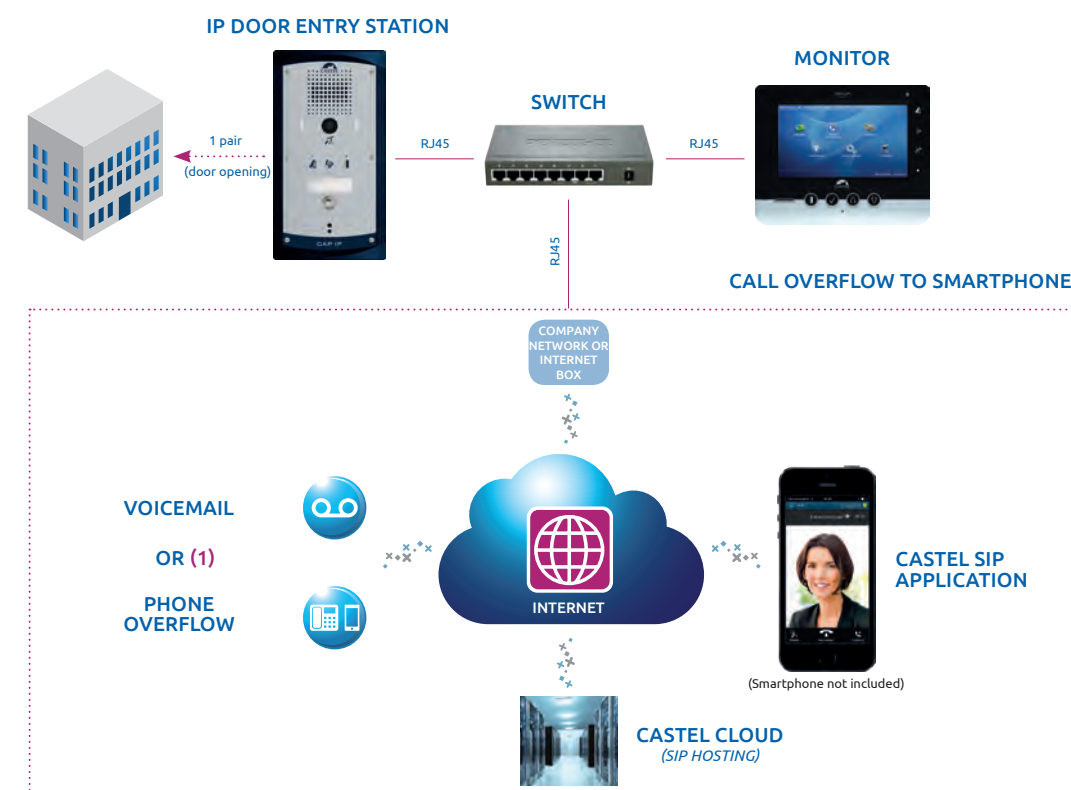
Optimal security :

- In addition to video verification from the door entry station camera, the reception monitor has a new CCTV feature, which allows viewing video streams from external IP cameras, both in communication and out of communication, enabling enhanced security.

Receive calls on a Smartphone or tablet:

- CASTEL SIP is an audio video intercom solution for Smartphones and tablets. Receive calls from your door entry station and open the door, wherever you are (through Wi-Fi and 3G/4G),
- The solution offers optimal security and service quality and allows you to stay connected to your intercom station.
- Easy-to-use and intuitive, the application is available for iPhone®, iPad® or Android® devices.

SCHEMATIC



(1) In case of a rejected call, non-reception or device off, it is possible to leave a voice mail message on a answering machine which comes directly to the contacted person mail box (audio file attached). You can also (optional function) overflow the call from the door entry station to GSM or landline phone numbers (only available in metropolitan France).





AUDIO & AUDIO VIDEO INTERCOMS CAP IP - PAD IP RANGE



CAP IP-V1B-P

Audio video Full IP/SIP entry station with 1 call button DDA compliant
REF **560.2000**

- > Stainless steel 316 L vandal proof front panel
- > Built-in colour video camera
- > 1 call button and label
- > 3 leds for DDA compliance
- > Integrated induction loop
- > IP64 - IK09 rating
- > PoE power supply (or optional external power supply)
- > H 250 mm x W 135 mm x D 14.5 mm (flush-mounted with flush box D 40 mm)
- > H 250 mm x W 135 mm x D 54.5 mm (surface mounted)

CAP IP-1B-P

Audio 1 call button version
REF **560.0000**



CAP IP-V2B-P

Audio video Full IP/SIP entry station with 2 call buttons DDA compliant
REF **560.2100**

- > Stainless steel 316 L vandal proof front panel
- > Built-in colour video camera
- > 2 call buttons and labels
- > 3 leds for DDA compliance
- > Integrated induction loop
- > IP64 - IK09 rating
- > PoE power supply (or optional external power supply)
- > H 250 mm x W 135 mm x D 14.5 mm (flush-mounted with flush box D 40 mm)
- > H 250 mm x W 135 mm x D 54.5 mm (surface mounted)

CAP IP-2B-P

Audio 2 call buttons version
REF **560.0100**



CAP IP-V3B-P

Audio video Full IP/SIP entry station with 3 call buttons DDA compliant
REF **560.2200**

- > Stainless steel 316 L vandal proof front panel
- > Built-in colour video camera
- > 3 call buttons and labels
- > 3 leds for DDA compliance
- > Integrated induction loop
- > IP64 - IK09 rating
- > PoE power supply (or optional external power supply)
- > H 250 mm x W 135 mm x D 14.5 mm (flush-mounted with flush box D 40 mm)
- > H 250 mm x W 135 mm x D 54.5 mm (surface mounted)

CAP IP-3B-P

Audio 3 call buttons version
REF **560.0200**



CAP IP-V1B-CLAV-P

Audio video Full IP/SIP entry station with 1 call button and keypad DDA compliant
REF **560.2600**

- > Stainless steel 316 L vandal proof front panel
- > Built-in colour video camera
- > 1 call button and label
- > Numerical keypad for direct dial and access code, buttons with Braille
- > 3 leds for DDA compliance
- > Integrated induction loop
- > IP64 - IK08 rating
- > PoE power supply (or optional external power supply)
- > H 350 mm x W 135 mm x D 14.5 mm (flush-mounted with flush box D 40 mm)
- > H 350 mm x W 135 mm x D 54.5 mm (surface-mounted)

CAP IP-1B-CLAV-P

Audio 1 call button and keypad version
REF **560.0600**



CAP IP-V2B-CLAV-P

Audio video Full IP/SIP entry station with 2 call buttons and keypad DDA compliant
REF **560.2700**

- > Stainless steel 316 L vandal proof front panel
- > Built-in colour video camera
- > 2 call buttons and labels
- > Numerical keypad for direct dial and access code, buttons with Braille
- > 3 leds for DDA compliance
- > Integrated induction loop
- > IP64 - IK08 rating
- > PoE power supply (or optional external power supply)
- > H 350 mm x W 135 mm x D 14.5 mm (flush-mounted with flush box D 40 mm)
- > H 350 mm x W 135 mm x D 54.5 mm (surface-mounted)

CAP IP-2B-CLAV-P

Audio 2 call buttons and keypad version
REF **560.0700**



CAP IP-V4B-P

Audio video Full IP/SIP entry station with 4 call buttons DDA compliant
REF **560.2300**

- > Stainless steel 316 L vandal proof front panel
- > Built-in colour video camera
- > 4 call buttons and labels
- > 3 leds for DDA compliance
- > Integrated induction loop
- > IP64 - IK09 rating
- > PoE power supply (or optional external power supply)
- > H 250 mm x W 135 mm x D 14.5 mm (flush-mounted with flush box D 40 mm)
- > H 250 mm x W 135 mm x D 54.5 mm (surface mounted)

CAP IP-4B-P

Audio 4 call buttons version
REF **560.0300**



CAP IP-V6B-P

Audio video Full IP/SIP entry station with 6 call buttons DDA compliant
REF **560.2400**

- > Stainless steel 316 L vandal proof front panel
- > Built-in colour video camera
- > 6 call buttons and labels
- > 3 leds for DDA compliance
- > Integrated induction loop
- > IP64 - IK09 rating
- > PoE power supply (or optional external power supply)
- > H 350 mm x W 135 mm x D 14.5 mm (flush-mounted with flush box D 40 mm)
- > H 350 mm x W 135 mm x D 54.5 mm (surface mounted)

CAP IP-6B-P

Audio 6 call buttons version
REF **560.0400**



CAP IP-V10B-P

Audio video Full IP/SIP entry station with 10 call buttons DDA compliant
REF **560.2500**

- > Stainless steel 316 L vandal proof front panel
- > Built-in colour video camera
- > 10 call buttons and labels
- > 3 leds for DDA compliance
- > Integrated induction loop
- > IP64 - IK09 rating
- > PoE power supply (or optional external power supply)
- > H 350 mm x W 135 mm x D 14.5 mm (flush-mounted with flush box D 40 mm)
- > H 350 mm x W 135 mm x D 54.5 mm (surface mounted)

CAP IP-10B-P

Audio 10 call buttons version
REF **560.0500**



PAD IP VIDEO-1B-P

Audio video Full IP/SIP entry station with names scrolling and 1 call button DDA compliant
REF **560.5000**

- > Stainless steel 316 L vandal proof front panel
- > Built-in colour video camera
- > 1 call button and label
- > 3 keys for names scrolling
- > Graphic display 128x64 backlighting
- > 3 leds for DDA compliance (or displayed on screen)
- > Integrated induction loop
- > IP64 - IK07 rating
- > PoE power supply (or optional external power supply)
- > H 350 mm x W 135 mm x D 14.5 mm (flush-mounted with flush box D 40 mm)
- > H 350 mm x W 135 mm x D 54.5 mm (surface-mounted)

PAD IP AUDIO-1B-P

Audio with names scrolling and 1 call button version
REF **560.4000**



PAD IP VIDEO-3B-P

Audio video Full IP/SIP entry station with names scrolling and 3 call buttons DDA compliant
REF **560.5100**

- > Stainless steel 316 L vandal proof front panel
- > Built-in colour video camera
- > 3 call buttons and labels
- > 3 keys for names scrolling
- > Graphic display 128x64 backlighting
- > 3 leds for DDA compliance (or displayed on screen)
- > Integrated induction loop
- > IP64 - IK07 rating
- > PoE power supply (or optional external power supply)
- > H 350 mm x W 135 mm x D 14.5 mm (flush-mounted with flush box D 40 mm)
- > H 350 mm x W 135 mm x D 54.5 mm (surface-mounted)

PAD IP AUDIO-3B-P

Audio with names scrolling and 3 call buttons version
REF **560.4100**



PAD IP VIDEO-CLAV-P

Audio video Full IP/SIP entry station with names scrolling and keypad DDA compliant
REF **560.5200**

- > Stainless steel 316 L vandal proof front panel
- > Built-in colour video camera
- > Numerical keypad for direct dial and access code, buttons with Braille
- > 3 keys for names scrolling
- > Graphic display 128x64 backlighting
- > 3 leds for DDA compliance (or displayed on screen)
- > Integrated induction loop
- > IP64 - IK07 rating
- > PoE power supply (or optional external power supply)
- > H 350 mm x W 135 mm x D 14.5 mm (flush-mounted with flush box D 40 mm)
- > H 350 mm x W 135 mm x D 54.5 mm (surface-mounted)

PAD IP AUDIO-CLAV-P

Audio with names scrolling and keypad version
REF **560.4200**





INTERCOMS WITH ACCESS CONTROL READER

CAP IP - PAD IP RANGE



CAP IP-V1B-MI/C

Audio video Full IP/SIP entry station with 1 call button DDA compliant and 13.56 MHz Mifare® serial number reader
REF **560.6600**

- > Stainless steel 316 L vandal proof front panel
- > Reader 13.56 MHz Mifare® serial number and 2 leds (green: authorized access, red: refused access)
- > Built-in colour video camera
- > 1 call button and label
- > 3 leds for DDA compliance
- > Integrated induction loop
- > IP64 - IK07 rating
- > PoE power supply (or optional external power supply)
- > H 350 mm x W 135 mm x D 14.5 mm (flush-mounted with flush box D 40 mm)
- > H 350 mm x W 135 mm x D 54.5 mm (surface-mounted)

CAP IP-V1B-MIS/C

13.56 MHz Mifare® sector reader version
REF **560.6700**

CAP IP-V1B-DES

13.56 MHz Mifare® Desfire® reader version
REF **560.6800**

CAP IP-V2B-MI/C

2 call buttons and 13.56 MHz Mifare® serial number reader version
REF **560.5900**



CAP IP-1B-MI/C

Audio Full IP/SIP entry station with 1 call button DDA compliant and 13.56 MHz Mifare® serial number reader
REF **560.6100**

- > Stainless steel 316 L vandal proof front panel
- > Reader 13.56 MHz Mifare® serial number and 2 leds (green: authorized access, red: refused access)
- > 1 call button and label
- > 3 leds for DDA compliance
- > Integrated induction loop
- > IP64 - IK07 rating
- > PoE power supply (or optional external power supply)
- > H 350 mm x W 135 mm x D 14.5 mm (flush-mounted with flush box D 40 mm)
- > H 350 mm x W 135 mm x D 54.5 mm (surface-mounted)

CAP IP-1B-MIS/C

13.56 MHz Mifare® sector reader version
REF **560.6200**

CAP IP-1B-DES

13.56 MHz Mifare® Desfire® reader version
REF **560.6300**

CAP IP-2B-MI/C

2 call buttons and 13.56 MHz Mifare® serial number reader version
REF **560.5400**



PAD IP VIDEO-MI/C

Audio video Full IP/SIP entry station with names scrolling DDA compliant and 13.56 MHz Mifare® serial number reader
REF **560.7600**

- > Stainless steel 316 L vandal proof front panel
- > Reader 13.56 MHz Mifare® serial number and 2 leds (green: authorized access, red: refused access)
- > Built-in colour video camera
- > 3 keys for names scrolling
- > Graphic display 128x64 backlighting
- > 3 leds for DDA compliance (or displayed on screen)
- > Integrated induction loop
- > IP65 - IK09 rating
- > PoE power supply (or optional external power supply)
- > H 350 mm x W 135 mm x D 14.5 mm (flush-mounted with flush box D 40 mm)
- > H 350 mm x W 135 mm x D 54.5 mm (surface-mounted)

PAD IP VIDEO-MIS/C

13.56 MHz Mifare® sector reader version
REF **560.7700**

PAD IP VIDEO-DES

13.56 MHz Mifare® Desfire® reader version
REF **560.7800**



PAD IP AUDIO-MI/C

Audio Full IP/SIP entry station with names scrolling DDA compliant and 13.56 MHz Mifare® serial number reader
REF **560.7100**

- > Stainless steel 316 L vandal proof front panel
- > Reader 13.56 MHz Mifare® serial number and 2 leds (green: authorized access, red: refused access)
- > 3 keys for names scrolling
- > Graphic display 128x64 backlighting
- > 3 leds for DDA compliance (or displayed on screen)
- > Integrated induction loop
- > IP65 - IK09 rating
- > PoE power supply (or optional external power supply)
- > H 350 mm x W 135 mm x D 14.5 mm (flush-mounted with flush box D 40 mm)
- > H 350 mm x W 135 mm x D 54.5 mm (surface-mounted)

PAD IP AUDIO-MIS/C

13.56 MHz Mifare® sector reader version
REF **560.7200**

PAD IP AUDIO-DES

13.56 MHz Mifare® Desfire® reader version
REF **560.7300**

SERVERS



XELLIP SERVEUR MAX

Multifunction intercom server
REF **540.0100**

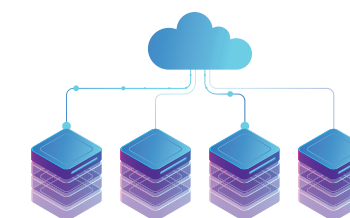
- > Allows to manage up to 1000 SIP extensions
- > Advanced functions (call groups, call zones, paging groups, conference, etc.)
- > Audio and video backup
- > SIP Trunk (interconnection of 2 SIP systems)
- > Castel technical support contract available for 2 years to the final client (free the first year - material warranty - and service fee the second year)
- > H 43 mm x W 426 mm x D 356 mm (rackable 1U black metallic case)



XELLIP ROUTEUR

20 stations router server
REF **540.0000**

- > Allows to manage up to 20 SIP stations (configuration, visualisation)
- > Management of audio et video calls
- > Advanced functions (call groups, call zones, paging groups, overflowing)
- > SIP Trunk (interconnection of 2 SIP systems)
- > PoE power supply (or optional external power supply)
- > H 137 mm x W 105 mm x D 33 mm



Serveur Max Virtuel

XELLIP SERVEUR MAX VIRTUEL

Virtual multifunction intercom server, with advanced functions (call groups, call zones, paging groups, conference, SIP Trunk, audio backup, etc.) - VMware compatible
REF **540.1400**

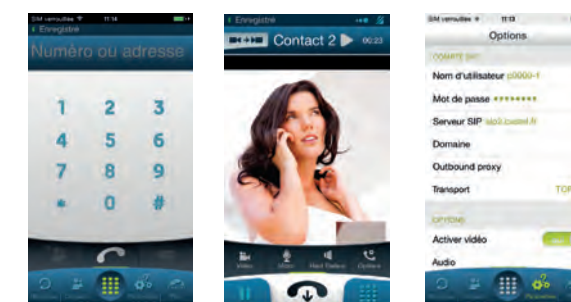
SOFTWARES AND INTERFACES



XELLIP MEDIA

SIP audio video reception interface
REF **540.1000**

- > This Softphone transforms your PC into a complete SIP station
- > Audio video communication with XELLIP or CAP IP range stations, or any other intercom system supporting the SIP protocol
- > Recording on a SIP server or working in Stand-Alone
- > Advanced functions (call transfer, call forwarding, automatic hang-up, management of a SIP contact directory, possibility to manage a webcam, remote control release)



APPLICATION CASTEL SIP

SIP audio-video intercom application for Smartphones and tablets (iPhone®, iPad® and Android®): for more details, please see page 46



XELLIP TRANSFER

IP interface to analog telephone
REF **540.2500**



CASTEL SUPERVISOR

Supervision software
REF **110.8300**

- > Events viewing and recording (communications, incoming / outgoing calls, on hold, relay status, forward status)
- > Graphical display or table for real time events viewing
- > Scheduled forward
- > Compatible with Windows XP, 7, 10, 2003 server, 2008 server
- > Compatible with Oracle and SQL Server databases
- > Multi-users software (only one license for server + remote client computer) using full web securised architecture

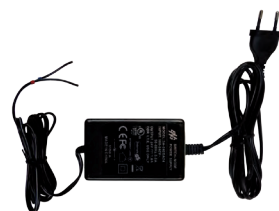


ACCESSORIES AND POWER SUPPLIES



HP SIP

SIP megaphone - PoE - requires a SIP server
REF **300.1000**



A24V-0A7-F

Power supply 24VDC 1A - wire plug
REF **110.9000**



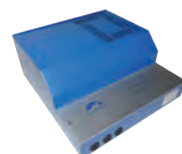
A24V-0A7-J

Power supply 24VDC 1A - Jack plug
REF **540.6000**



A24V-2A

Cutting power supply on din track
24VDC 2A
REF **110.9100**



A24V-3A-S

24VDC 3A saved power supply - battery
2.1 Ah
REF **440.4900-1**



XEKMED

Surface mounted kit for XE MED station
REF **540.4400**



SUPPORT XE PLATINE-SCREEN

Desk stand for XE PLATINE-SCREEN
REF **500.9265**



SUPPORT XE MONITOR

Desk stand for XE MONITOR
REF **540.8000**



OPTION WIFI

WiFi module and antenna for XE and CAP IP / PAD IP units
REF **500.9300**



CEINTURE 250

Stainless-steel anti-tear housing (surface-mounting) for CAP IP units - H 250 mm
REF **560.9200**



CEINTURE 350

Stainless-steel anti-tear housing (surface-mounting) for CAP IP and PAD IP units - H 350 mm
REF **560.9300**



CEINTURE 430

Stainless-steel belt (surface mounting) for PAD IP units with built in reader and keypad
REF **560.9400**



CEINTURE 280

Stainless-steel belt for small XE units (H 280 mm)
REF **590.9200**



CEINTURE 375

Stainless-steel belt for big XE units (H 375 mm)
REF **590.9300**



VISIÈRE 280

Rain shield for small XE units (H 280 mm)
REF **590.9400**



VISIÈRE 375

Rain shield for big XE units (H 375 mm)
REF **590.9500**



KIT DOME CAMERA XE2

5 camera lens + tool pack
REF **590.9700**

KIT GRIFFES

Plasterboard mounting kit for CAP IP and PAD IP units
REF **560.9000**

KIT GRIFFES PM XE2

Plasterboard mounting kit for small XE units (H 280 mm)
REF **590.9600**

KIT GRIFFES GM XE2

Plasterboard mounting kit for big XE units (H 375 mm)
REF **590.9650**





EXAMPLE GIVEN FOR QUOTE WITH 1 ACCESS

for any other configuration or specific request, do not hesitate to contact our quote service (devis@castel.fr)

IP/SIP AUDIO VIDEO INTERCOMS

Number of stations to call	AUDIO VIDEO INTERCOM							RECEPTION STATION			
	XE VIDEO 1B 1 call button intercom 590.2000	XE VIDEO 2B 2 call buttons intercom 590.2100	XE VIDEO 3B 3 call buttons intercom 590.2200	XE VIDEO 4B 4 call buttons intercom 590.2300	XE VIDEO 6B 6 call buttons intercom 590.2400	XE VIDEO 10B 10 call buttons intercom 590.2500	XE PAD VIDEO 1B Intercom with names scrolling and 1 call button 590.5000	XE DESK-SCREEN V-P Touch screen audio video master station 500.2600	XE MONITOR-P Touch screen audio video monitor 500.8000	XELLIP MEDIA SIP audio video reception Softphone 540.1000	SIP audio video phone (via an IPBX - not supplied by Castel)
1	1							1	1	1	1
2		1						2	2	1	2
3			1					3	3	1	3
4				1				4	4	1	4
5					1			5	5	1	5
6					1			6	6	1	6
7						1		7	7	1	7
8						1		8	8	1	8
9						1		9	9	1	9
10						1		10	10	1	10
more than 10							1	more than 10	more than 10	1	more than 10

IP/SIP AUDIO INTERCOMS

Number of stations to call	AUDIO INTERCOM							RECEPTION STATION		
	XE AUDIO 1B 1 call button intercom 590.0000	XE AUDIO 2B 2 call buttons intercom 590.0100	XE AUDIO 3B 3 call buttons intercom 590.0200	XE AUDIO 4B 4 call buttons intercom 590.0300	XE AUDIO 6B 6 call buttons intercom 590.0400	XE AUDIO 10B 10 call buttons intercom 590.0500	XE PAD AUDIO 1B Intercom with names scrolling and 1 call button 590.4000	XE DESK-GRAPH-P Audio master station 500.2000	XELLIP MEDIA SIP audio video reception Softphone 540.1000	SIP audio phone (via an IPBX - not supplied by Castel)
1	1							1	1	1
2		1						2	1	2
3			1					3	1	3
4				1				4	1	4
5					1			5	1	5
6					1			6	1	6
7						1		7	1	7
8						1		8	1	8
9						1		9	1	9
10						1		10	1	10
more than 10							1	more than 10	1	more than 10

IP/SIP INTERCOMS WITH KEYPAD

Number of stations to call	INTERCOM WITH KEYPAD			RECEPTION STATION				
	XE VIDEO 1B CLAV (OR XE AUDIO 1B CLAV) Audio video intercom with keypad and 1 call button (or audio) 590.2600 (OR 590.0600)	XE VIDEO 2B CLAV (OR XE AUDIO 2B CLAV) Audio video intercom with keypad and 2 call buttons (or audio) 590.2700 (OR 590.0700)	XE PAD VIDEO CLAV (OR XE PAD AUDIO CLAV) Audio video intercom with names scrolling and keypad (or audio) 590.5200 (OR 590.4200)	XE DESK-SCREEN V-P Touch screen audio video master station 500.2600	XE MONITOR-P Touch screen audio video monitor 500.8000	XE DESK-GRAPH-P Audio master station 500.2000	XELLIP MEDIA SIP audio video reception Softphone 540.1000	SIP audio video phone (via an IPBX - not supplied by Castel)
1	1			1	1	1	1	1
2		1		2	2	2	1	2
more than 2			1	more than 2	more than 2	more than 2	1	more than 2

IP/SIP INTERCOMS WITH BUILT IN ACCESS CONTROL READER

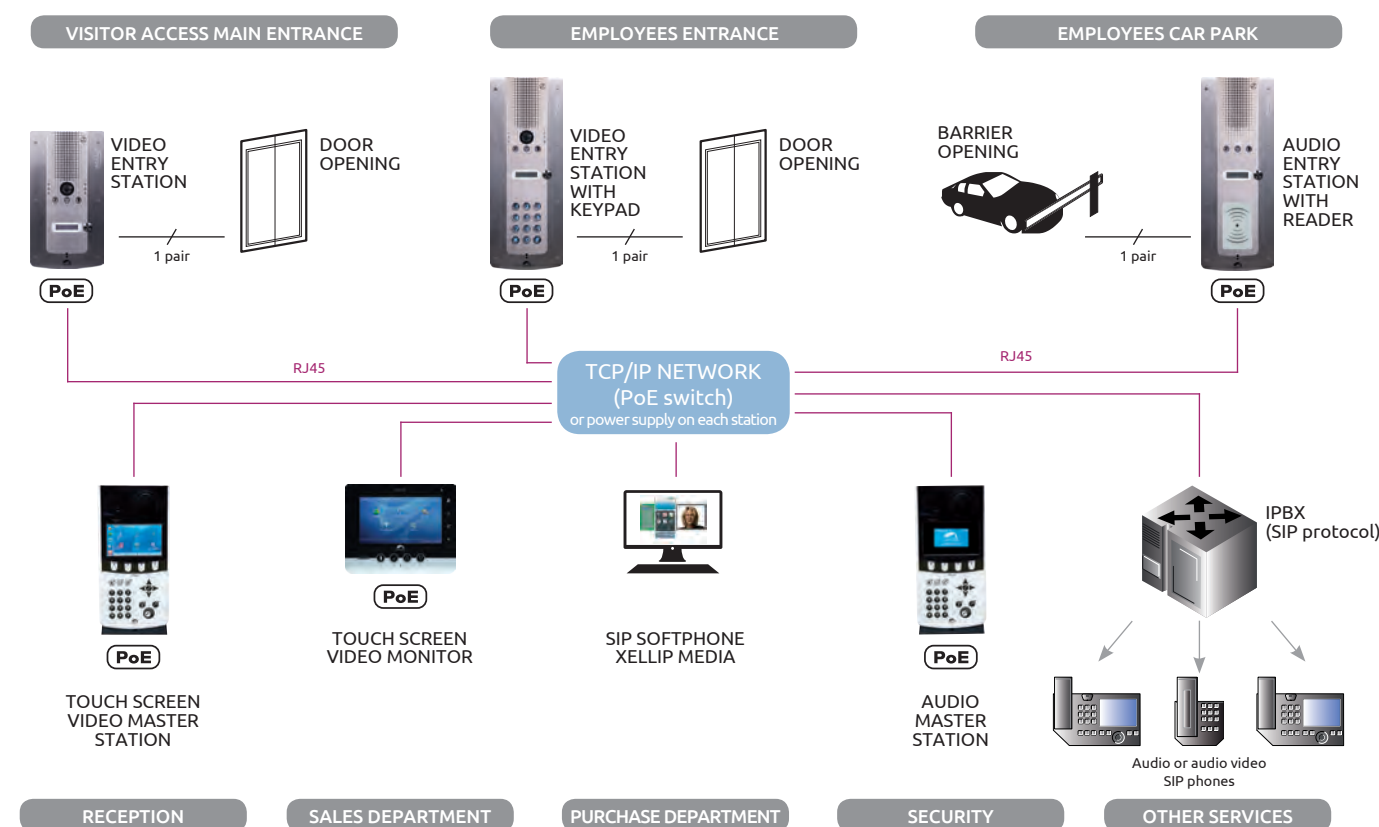
Number of stations to call	INTERCOM WITH READER			RECEPTION STATION				
	XE VIDEO 1B MI/C (OR XE AUDIO 1B MI/C) Audio video intercom with 1 call button and Mifare reader (or audio) 590.6600 (OR 590.6100)	XE VIDEO 2B MI/C (OR XE AUDIO 2B MI/C) Audio video intercom with 2 call buttons and Mifare reader (or audio) 590.5900 (OR 590.5400)	XE PAD VIDEO MI/C (OR XE PAD AUDIO MI/C) Audio video intercom with names scrolling and Mifare reader (or audio) 590.7600 (OR 590.7100)	XE DESK-SCREEN V-P Touch screen audio video master station 500.2600	XE MONITOR-P Touch screen audio video monitor 500.8000	XE DESK-GRAPH-P Audio master station 500.2000	XELLIP MEDIA SIP audio video reception Softphone 540.1000	SIP audio video phone (via an IPBX - not supplied by Castel)
1	1			1	1	1	1	1
2		1		2	2	2	1	2
more than 2			1	more than 2	more than 2	more than 2	1	more than 2

ACCESSORIES

A24V-2A	Cutting power supply on din track 24VDC 2A: if the door entry station is not PoE powered	110.9100
A24V-0A7-J	Power supply 24VDC 1A - Jack plug: if the master station is not PoE powered	540.6000
BPM32/C	Mifare card for door entry station with reader	910.0086
BPM34/C	Mifare key-ring for door entry station with reader	910.0079
KIT GRIFFES XE2	Plasterboard mounting kit for XE units	590.9600
CEINTURE 280	Stainless-steel belt for small XE units H 280 mm (1 to 6 call buttons)	590.9200
CEINTURE 375	Stainless-steel belt for big XE units H 375 mm (10 call buttons, door entry station with names scrolling, with reader, with keypad)	590.9300
VISIÈRE 280	Rain shield for small XE units (H 280 mm)	590.9400
VISIÈRE 375	Rain shield for big XE units (H 375 mm)	590.9500
OPTION WIFI	WiFi module and antenna for XE units	500.9300
SUPPORT XE MONITOR	Desk stand for XE MONITOR	540.8000

FOR CALLS TO SMARTPHONES AND TABLETS SEE NEXT PAGES

SCHEMATIC



RJ45 cable: category 5 or 6. Command opening: 9/10 cable.