

SERIES 450

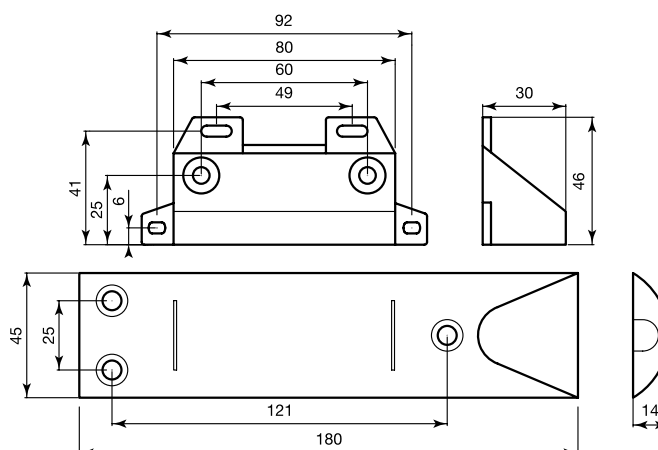
Magnetic contact for garage doors

- Floor mounting
- Die-cast aluminum housing
- Wire connection
- With anti-tampering wire loop
- Steel sheath
- IMQ, Vds, NF, INCERT approvals

Aluminum magnetic contact for garage or sliding/folding doors. The strong housing construction of die-cast aluminum ensures maximum resistance under the wheels of heavy-load vehicles, fork-lift trucks etc., making it suitable for heavy-duty applications. The reed part is fixed to the ground with three screws, while the magnet is mounted on the door (6 mounting holes available). Its long operating distances allow efficient operation also with doors of large gap. The reed section contains a tight reed with polyurethane resin and an anti-tampering loop to reduce violation risks. Connection uses 4 wires (2 wires for NC contact with near magnet and 2 wires for anti-tampering) or 5 wires with changeover reed (3 wires for reed contacts + 2 wires for anti-tampering), protected by a steel sheath, covered by black PVC. Contact 450 TFC 2 is magnetically balanced to reduce the risk of violation through an external magnet.

GENERAL SPECIFICATIONS

Housing material	Die-cast aluminum
Operation	Reed contact with NC output with near magnet or changeover reed contact
Connection type	Wire (2 for contact - 3 for changeover contact + 2 for anti-tampering)
Operating temperature	-25°C to +55°C
IP degree	IP 65
Standard equipment	Cable protection sheathing, 10 mm diameter, 1 m length, steel with black PVC coating; anti-tampering wires
Packaging	10 pcs./package



ORDER CODES

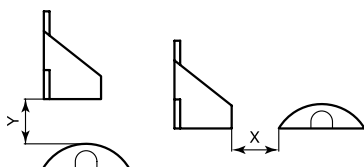
Code	Y max / X max (not iron)	Y max (iron)	Contact type	Max. voltage	Max. current	Max. power	N° of wires	Cable length	Approval	Package weight	Notes
450	35/25 mm	20 mm	NC*	200V DC	1 A	10 W	4	1,2 m	IMQ Liv. I** Vds G191589 Cl.B	0,38 kg	
450 BE	35/25 mm	20 mm	NC*	200V DC	1 A	10 W	4	1,2 m	INCERT N° B-630-0001	0,38 kg	
450 FR	35/25 mm	20 mm	NC*	200V DC	1 A	10 W	4	1,2 m	NF A2P TYPE 3	0,38 kg	
450 STF	23/12 mm	20 mm	changeover	100V DC	300 mA	3 W	5	1,2 m	-	0,38 kg	
450 TF 2	35/25 mm	20 mm	NC*	200V DC	1 A	10 W	4	2 m	IMQ Liv. I**	0,38 kg	
450 TF 4	35/25 mm	20 mm	NC*	200V DC	1 A	10 W	4	4 m	IMQ Liv. I**	0,53 kg	2m sheath
450 TFC 2	26/16 mm	16 mm	NC*	100V DC	300 mA	3 W	4	2 m	Vds G198067 Cl.C	0,38 kg	

Y max: maximum vertical installation distance, X max: maximum horizontal installation distance (see diagram below)

* With near magnet

** IMQ approval for outdoor use

Y and X distance diagram



Voltage data refer to contacts, the product must be used within the very low voltage limits (max. voltage 74V DC - 49V AC)

ACCESSORIES AVAILABLE (see accessories page)

Code	Description
450 MAGNETE	Magnet part for 450
AG 10	Black PVC-coated steel sheath - 10 m