

DOMONIAL

The ultimate wireless alarm system for monitored applications

Honeywell



Control

Total Connect 2.0E



Managing the Domonial system over the Internet

TCU4-800M



Portable LCD Keypad with TAG reader (62 x 155 x 28mm)

GKP-S8M



Portable LED Keypad with TAG reader, and siren (112,5 x 175,5 x 25 mm)

TAG-G / TAG-I / TAG4



TAG grey, ivory ou four colours kit (red, blue, yellow, black) (47 x 30 x 3mm)

TCPA1B / TCPA2B



Panic Alert keyfob (39 x 14mm - Ø x h)

TCE800M



Two-way Keyfob (57 x 31.75 x 12.7 mm)

TCC8M



Two-way Keyfob with system status (56 x 48 x 9mm)

Detection / Image

CAMIR-F1



- PIR with built in still camera
- Picture on event and/or on demand
- Pet immune (up to 36kg)
- Colour images
- White LED for images in total darkness
- Detection range : 11m x 12m
- Up to four years battery life
- 55 x 121 x 64mm

Detection

DT8M



- DUAL TEC® motion sensor with optional pet tolerance
- 15m x 18m
 - up to four years battery life
 - 125 x 75 x 52mm

IR8M / IRPI8M



- PIR / Pet immune PIR
- Up to four years battery life
 - 112 x 60 x 40mm

DO8M / DODT800GY-B



- Door contact
- Up to five years battery life
 - External input (DODT800GY-B)
 - 102 x 22 x 23mm (DO8M)
 - 112 x 60 x 40mm (DODT800GY-B)

SHK8M / SHKC8M



- Shock sensor
- Shock only (SHK8M) or shock with door contact (SHKC8M)
 - Up to five years battery life
 - 90 x 40.6 x 30mm

FG8M



- Glassbreak
- Up to six/seven years battery life
 - 108 x 80 x 43mm

DF8M / DFS8M



- Smoke sensor with sounder
- DF8M: 5 years battery life
 - DFS8M: Sealed Lithium battery, powered for life (10 years)
 - Ø135 x 58mm (DF8M)
 - Ø120 x 45mm (DFS8M)

CO8M



- Carbon Monoxide Detector with sounder
- 120mm x 105mm x 45mm
 - Sealed Lithium battery, powered for life

DET8M

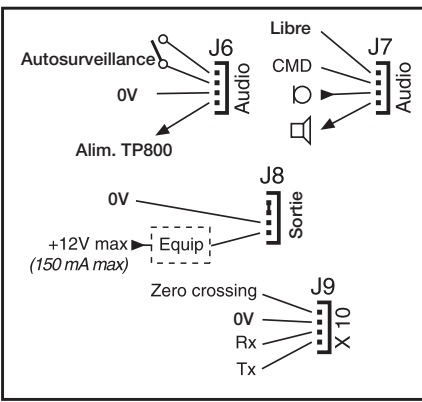


- Flood Detector and Temperature Sensor
- NC input can be used for intruder alarm
 - 90 x 40.6 x 30mm

BA04V35

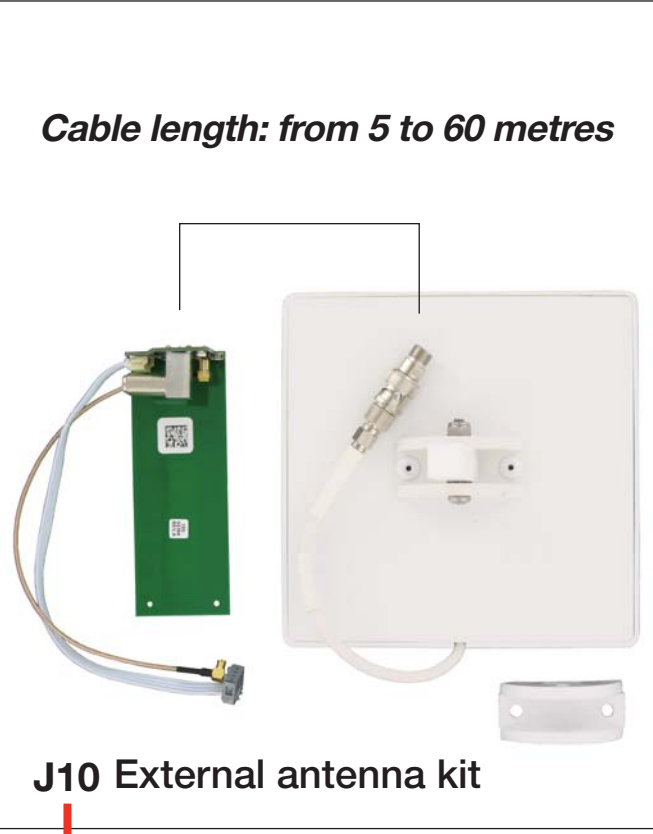


Wiring diagram

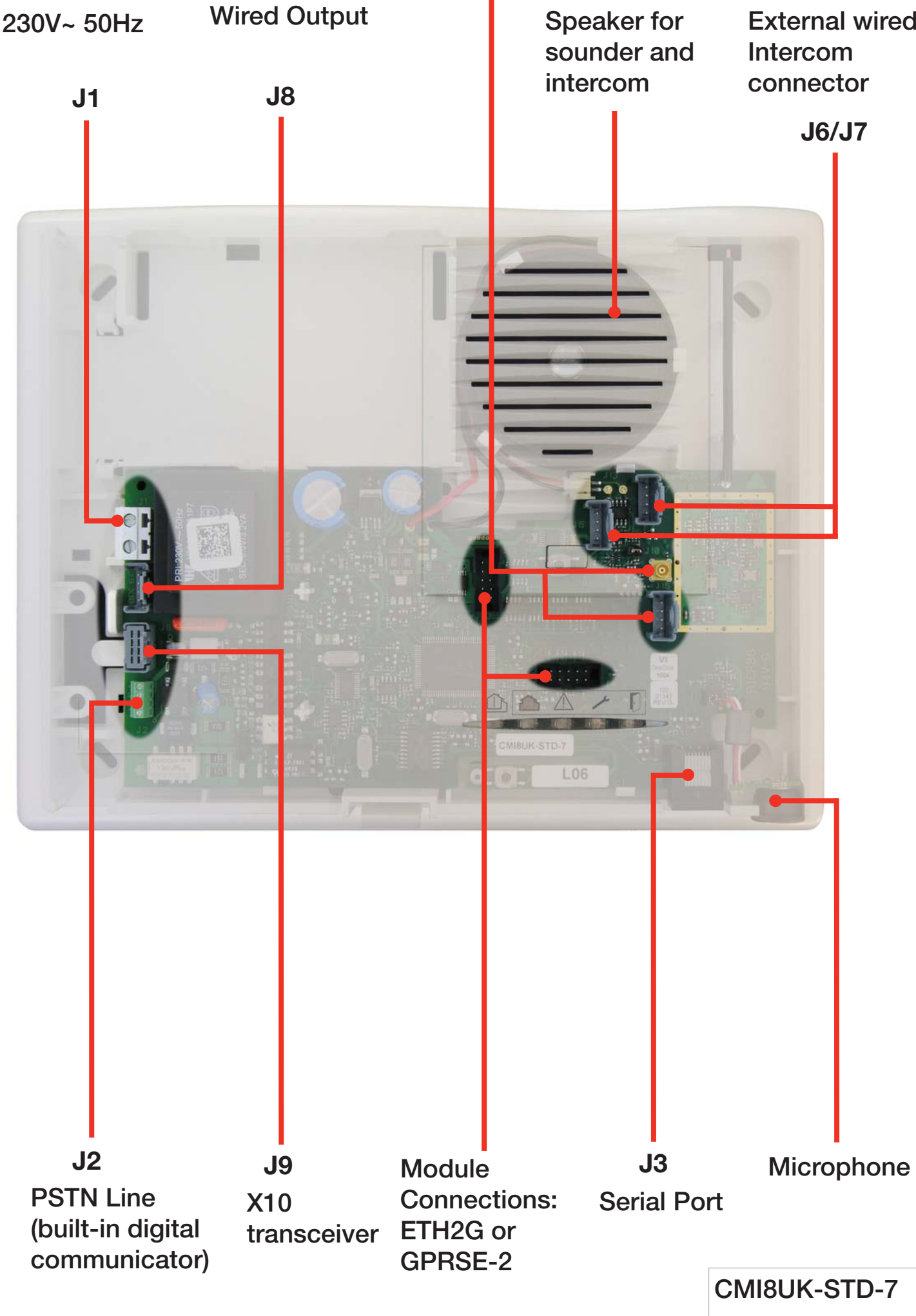


EXT-ANTENNA-1

Cable length: from 5 to 60 metres



J10 External antenna kit



230V~ 50Hz

Wired Output

Speaker for sounder and intercom

External wired Intercom connector

J1

J8

J6/J7

J2 PSTN Line (built-in digital communicator)

J9 X10 transceiver

Module Connections: ETH2G or GPRSE-2

J3 Serial Port

Microphone

CMI8UK-STD-7

Alerting

GKP-S8M



Keypad with built-in siren

SI800M



Indoor siren (Ø165 x 70mm)

SEF8M



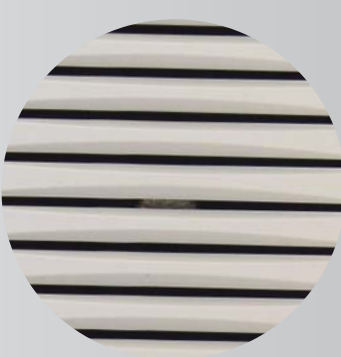
External siren with strobe light (240 x 330 x 73mm)

Monitoring

TP800

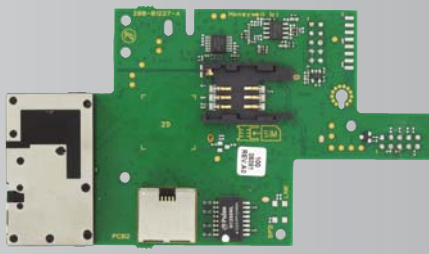


Wired Remote Intercom Terminal - Up to 3



Built-in speaker and microphone

ETH2G



Ethernet and GSM/GPRS communication module

GPRSE-2



GSM/GPRS communication module



Built-in PSTN communicator

Home automation

SMPG-UK



- Smartplug for home automation
- Can be controlled by keypads, keyfobs or over the Internet with Honeywell Total Connect 2.0E
 - Up to 8 devices
 - On/Off up to 3600W
 - Power consumption indication on Honeywell Total Connect 2.0E

Programming

On site



Serial cable/USB



The TCU keypad can also be used for programming

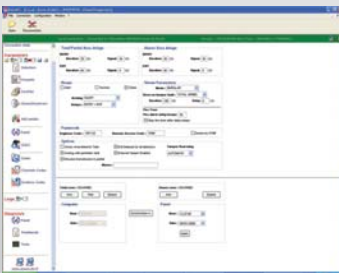
Remotely



PSTN Modem



GSM/GPRS Modem



DOMOPC Software or laptop/desktop

Part Numbers	Software	Serial cable	Serial/USB adaptor	PSTN Modem	GSM Modem
DOMOPC-LT	✓	✓	✓		
DOMOPC	✓	✓	✓	✓	
DOMOPC-GSM	✓	✓	✓		✓
DOMODEM2				✓	