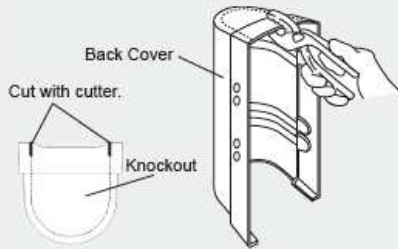


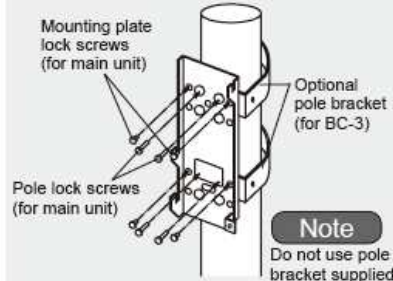
8-2 BACK COVER : BC-3

1. Cutout of the knockout



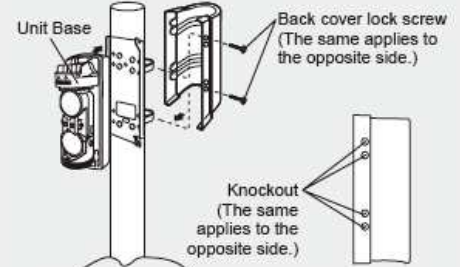
Cut off the knockout portion of the back cover with a cutter, etc.

2. Installation of mounting plate



Fix the unit base body mounting-plate and the pole bracket for the option supplied with the back cover by using the supplied screws.

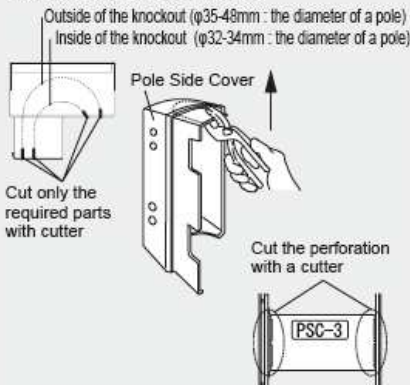
3. Installation of the unit base and the back cover



After mounting the units base, fix the back cover on the pole bracket by using the screws (4 pieces). Align the optical axis and check for the operation, then close the cover. (See "3. INSTALLATION")

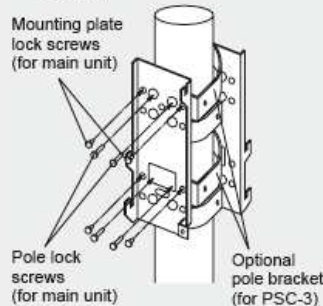
8-3 POLE SIDE COVER : PSC-3

1. Cutout of the knockout



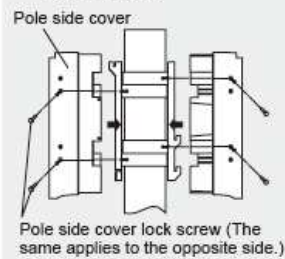
Cut the edge of the knockout (outside or inside) with a nipper and then break the knockout portion with a cutter. Also break the center bridge of the pole side cover along with the perforation.

2. Installation of the pole side covers



Fix the unit base body mounting-plate and the pole bracket for the option supplied with the pole side cover by using the supplied screws.

3. Installation of the pole side covers

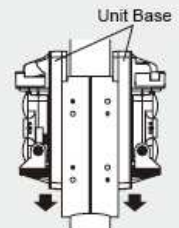


Note

When the pole side cover fix on the pole bracket, make sure the position of the screws.

Fix the pole side cover on the pole bracket by using the screws (8 pieces).

4. Mounting of the unit base



After mounting the units base, align the optical axis and check for the operation, then close the cover. (See "3. INSTALLATION")